



# SLC6A8 Monoclonal Antibody

<b>Catalog No</b>	YP-mAb-12808
<b>Isotype</b>	IgG
<b>Reactivity</b>	Human;Mouse;Rat
<b>Applications</b>	WB
<b>Gene Name</b>	SLC6A8
<b>Protein Name</b>	Sodium- and chloride-dependent creatine transporter 1
<b>Immunogen</b>	The antiserum was produced against synthesized peptide derived from human SLC6A8. AA range:581-630
<b>Specificity</b>	SLC6A8 Monoclonal Antibody detects endogenous levels of SLC6A8 protein.
<b>Formulation</b>	Liquid in PBS containing 50% glycerol, 0.5% BSA and 0.02% sodium azide.
<b>Source</b>	Monoclonal, Mouse,IgG
<b>Purification</b>	The antibody was affinity-purified from mouse antiserum by affinity-chromatography using epitope-specific immunogen.
<b>Dilution</b>	WB 1:500-1:2000
<b>Concentration</b>	1 mg/ml
<b>Purity</b>	≥90%
<b>Storage Stability</b>	-20°C/1 year
<b>Synonyms</b>	SLC6A8; Sodium- and chloride-dependent creatine transporter 1; CT1; Creatine transporter 1; Solute carrier family 6 member 8
<b>Observed Band</b>	70kD
<b>Cell Pathway</b>	Membrane; Multi-pass membrane protein.
<b>Tissue Specificity</b>	Predominantly expressed in skeletal muscle and kidney. Also found in brain, heart, colon, testis and prostate.
<b>Function</b>	disease:Defects in SLC6A8 are the cause of X-linked creatine deficiency syndrome [MIM:300352]. X-linked creatine deficiency syndrome causes developmental delay, hypotonia, mental retardation, seizures, short stature and midface hypoplasia.,function:Required for the uptake of creatine in muscles and brain.,similarity:Belongs to the sodium:neurotransmitter symporter (SNF) family.,tissue specificity:Predominantly expressed in skeletal muscle and kidney. Also found in brain, heart, colon, testis and prostate.,
<b>Background</b>	The protein encoded by this gene is a plasma membrane protein whose function is to transport creatine into and out of cells. Defects in this gene can result in X-linked creatine deficiency syndrome. Multiple transcript variants encoding different isoforms have been found for this gene. [provided by RefSeq, Dec 2008],



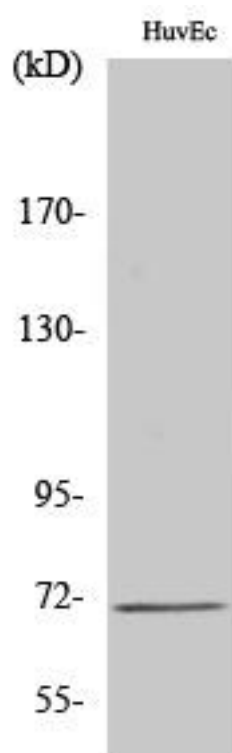
**matters needing attention**

Avoid repeated freezing and thawing!

**Usage suggestions**

This product can be used in immunological reaction related experiments. For more information, please consult technical personnel.

**Products Images**



Western Blot analysis of various cells using SLC6A8 Monoclonal Antibody