



# SCFD1 Monoclonal Antibody

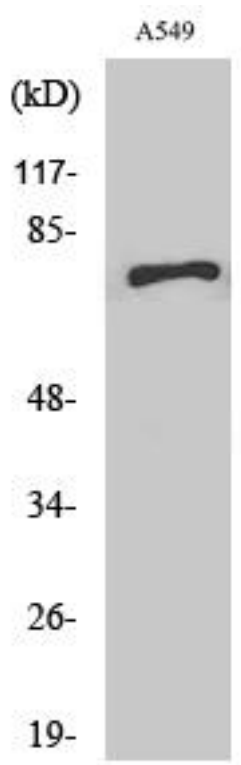
<b>Catalog No</b>	YP-mAb-12802
<b>Isotype</b>	IgG
<b>Reactivity</b>	Human;Mouse;Rat
<b>Applications</b>	WB
<b>Gene Name</b>	SCFD1
<b>Protein Name</b>	Sec1 family domain-containing protein 1
<b>Immunogen</b>	The antiserum was produced against synthesized peptide derived from human SCFD1. AA range:533-582
<b>Specificity</b>	SCFD1 Monoclonal Antibody detects endogenous levels of SCFD1 protein.
<b>Formulation</b>	Liquid in PBS containing 50% glycerol, 0.5% BSA and 0.02% sodium azide.
<b>Source</b>	Monoclonal, Mouse,IgG
<b>Purification</b>	The antibody was affinity-purified from mouse antiserum by affinity-chromatography using epitope-specific immunogen.
<b>Dilution</b>	WB 1:500-1:2000
<b>Concentration</b>	1 mg/ml
<b>Purity</b>	≥90%
<b>Storage Stability</b>	-20°C/1 year
<b>Synonyms</b>	SCFD1; C14orf163; KIAA0917; STXBP1L2; FKSG23; Sec1 family domain-containing protein 1; SLY1 homolog; Sly1p; Syntaxin-binding protein 1-like 2
<b>Observed Band</b>	
<b>Cell Pathway</b>	Cytoplasm . Endoplasmic reticulum membrane ; Peripheral membrane protein . Golgi apparatus, Golgi stack membrane ; Peripheral membrane protein .
<b>Tissue Specificity</b>	Brain,Epithelium,Heart,Liver,Lymph,Pituitary,Placenta,Platelet,Umbilical co
<b>Function</b>	function:Involved in vesicular transport between the endoplasmic reticulum and the Golgi.,PTM:Phosphorylated upon DNA damage, probably by ATM or ATR.,similarity:Belongs to the STXBP/unc-18/SEC1 family.,subunit:Binds STX5A.,
<b>Background</b>	function:Involved in vesicular transport between the endoplasmic reticulum and the Golgi.,PTM:Phosphorylated upon DNA damage, probably by ATM or ATR.,similarity:Belongs to the STXBP/unc-18/SEC1 family.,subunit:Binds STX5A.,
<b>matters needing attention</b>	Avoid repeated freezing and thawing!



### Usage suggestions

This product can be used in immunological reaction related experiments. For more information, please consult technical personnel.

### Products Images



Western Blot analysis of various cells using SCFD1 Monoclonal Antibody