

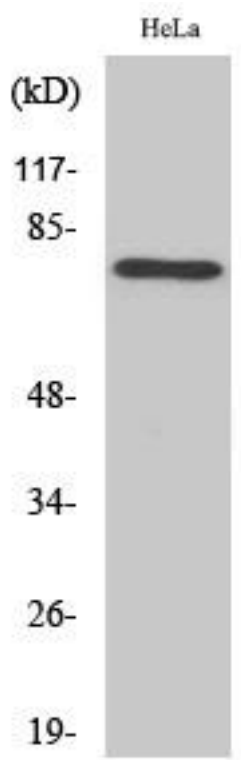


Rabphilin-3A Monoclonal Antibody

Catalog No	YP-mAb-12797
Isotype	IgG
Reactivity	Human;Mouse;Rat
Applications	WB
Gene Name	RPH3A
Protein Name	Rabphilin-3A
Immunogen	The antiserum was produced against synthesized peptide derived from human Rabphilin 3A. AA range:203-252
Specificity	Rabphilin-3A Monoclonal Antibody detects endogenous levels of Rabphilin-3A protein.
Formulation	Liquid in PBS containing 50% glycerol, 0.5% BSA and 0.02% sodium azide.
Source	Monoclonal, Mouse,IgG
Purification	The antibody was affinity-purified from mouse antiserum by affinity-chromatography using epitope-specific immunogen.
Dilution	WB 1:500-1:2000
Concentration	1 mg/ml
Purity	≥90%
Storage Stability	-20°C/1 year
Synonyms	RPH3A; KIAA0985; Rabphilin-3A; Exophilin-1
Observed Band	75kD
Cell Pathway	Cytoplasmic vesicle, secretory vesicle, synaptic vesicle membrane . Cell projection, dendritic spine . Cell junction, synapse, postsynaptic cell membrane . Membrane ; Peripheral membrane protein .
Tissue Specificity	Brain,Lung,
Function	function:Protein transport. Probably involved with Ras-related protein Rab-3A in synaptic vesicle traffic and/or synaptic vesicle fusion. Could play a role in neurotransmitter release by regulating membrane flow in the nerve terminal.,similarity:Contains 1 FYVE-type zinc finger.,similarity:Contains 1 RabBD (Rab-binding) domain.,similarity:Contains 2 C2 domains.,
Background	Exocytosis of neurotransmitters and hormones is fundamental to synaptic neurotransmission and cell-cell communication. RAB3A (MIM 179390) is a small G protein that is thought to act at late stages of exocytosis, and RPH3A is a RAB3A effector (Lin et al., 2007 [PubMed 17149709]).[supplied by OMIM, Jul 2008],
matters needing attention	Avoid repeated freezing and thawing!

**Usage suggestions**

This product can be used in immunological reaction related experiments. For more information, please consult technical personnel.

Products Images

Western Blot analysis of various cells using
Rabphilin-3A Monoclonal Antibody