

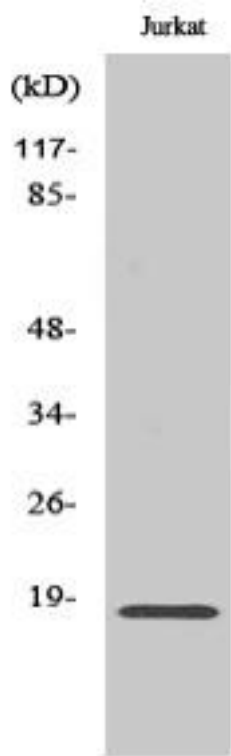


Neuromedin-S Monoclonal Antibody

| | |
|----------------------------------|---|
| Catalog No | YP-mAb-12760 |
| Isotype | IgG |
| Reactivity | Human;Rat;Mouse; |
| Applications | WB |
| Gene Name | NMS |
| Protein Name | Neuromedin-S |
| Immunogen | The antiserum was produced against synthesized peptide derived from human NMS. AA range:104-153 |
| Specificity | Neuromedin-S Monoclonal Antibody detects endogenous levels of Neuromedin-S protein. |
| Formulation | Liquid in PBS containing 50% glycerol, 0.5% BSA and 0.02% sodium azide. |
| Source | Monoclonal, Mouse,IgG |
| Purification | The antibody was affinity-purified from mouse antiserum by affinity-chromatography using epitope-specific immunogen. |
| Dilution | WB 1:500-1:2000 |
| Concentration | 1 mg/ml |
| Purity | ≥90% |
| Storage Stability | -20°C/1 year |
| Synonyms | NMS; Neuromedin-S |
| Observed Band | 24kD |
| Cell Pathway | Secreted . |
| Tissue Specificity | Brain, |
| Function | function:Implicated in the regulation of circadian rhythms through autocrine and/or paracrine actions.,similarity:Belongs to the NmU family., |
| Background | This gene encodes a member of the neuromedin family of neuropeptides. The encoded preproprotein is proteolytically processed to generate a biologically active neuropeptide that plays a role in the regulation of circadian rhythm, anorexigenic action, antidiuretic action, cardiovascular function and stimulation of oxytocin and vasopressin release. [provided by RefSeq, May 2016], |
| matters needing attention | Avoid repeated freezing and thawing! |
| Usage suggestions | This product can be used in immunological reaction related experiments. For more information, please consult technical personnel. |



Products Images



Western Blot analysis of various cells using
Neuromedin-S Monoclonal Antibody