



# Neuroglycan C Monoclonal Antibody

<b>Catalog No</b>	YP-mAb-12759
<b>Isotype</b>	IgG
<b>Reactivity</b>	Human;Mouse;Rat
<b>Applications</b>	WB
<b>Gene Name</b>	CSPG5
<b>Protein Name</b>	Chondroitin sulfate proteoglycan 5
<b>Immunogen</b>	The antiserum was produced against synthesized peptide derived from human CSPG5. AA range:211-260
<b>Specificity</b>	Neuroglycan C Monoclonal Antibody detects endogenous levels of Neuroglycan C protein.
<b>Formulation</b>	Liquid in PBS containing 50% glycerol, 0.5% BSA and 0.02% sodium azide.
<b>Source</b>	Monoclonal, Mouse,IgG
<b>Purification</b>	The antibody was affinity-purified from mouse antiserum by affinity-chromatography using epitope-specific immunogen.
<b>Dilution</b>	WB 1:500-1:2000
<b>Concentration</b>	1 mg/ml
<b>Purity</b>	≥90%
<b>Storage Stability</b>	-20°C/1 year
<b>Synonyms</b>	CSPG5; CALEB; NGC; Chondroitin sulfate proteoglycan 5; Acidic leucine-rich EGF-like domain-containing brain protein; Neuroglycan C
<b>Observed Band</b>	60kD
<b>Cell Pathway</b>	Cell membrane ; Single-pass type I membrane protein . Cell junction, synapse, synaptic cell membrane ; Single-pass type I membrane protein . Endoplasmic reticulum membrane ; Single-pass type I membrane protein . Golgi apparatus membrane ; Single-pass type I membrane protein . Cell surface . In neurons, localizes to synaptic junctions. Also detected in the endoplasmic reticulum and the Golgi. Partially enriched in lipid rafts. .
<b>Tissue Specificity</b>	Restricted to brain (at protein level).
<b>Function</b>	developmental stage:Expressed in brain of 3 months, 5 and 10-year-old individuals.,function:May function as a growth and differentiation factor involved in neuritogenesis. May induce ERBB3 activation.,miscellaneous:Different forms of various molecular weight have been observed. Such forms are possibly due to different levels of glycosylation, phosphorylation and/or protein cleavage.,PTM:N-glycosylated.,PTM:O-glycosylated; contains chondroitin sulfate glycans. Part-time proteoglycan, expressed in part as a proteoglycan exhibiting chondroitin sulfate glycans and in part as a non-proteoglycan form. The relative amount of both forms depends on tissues and tissues maturation.,PTM:Phosphorylated; in intracellular and extracellular



parts.,similarity:Contains 1 EGF-like domain.,subcellular location:In neurons, localizes to synaptic junctions (By similarity). Also detected in the endoplasmic reti

#### Background

The protein encoded by this gene is a proteoglycan that may function as a neural growth and differentiation factor. Several transcript variants encoding different isoforms have been found for this gene. [provided by RefSeq, May 2011],

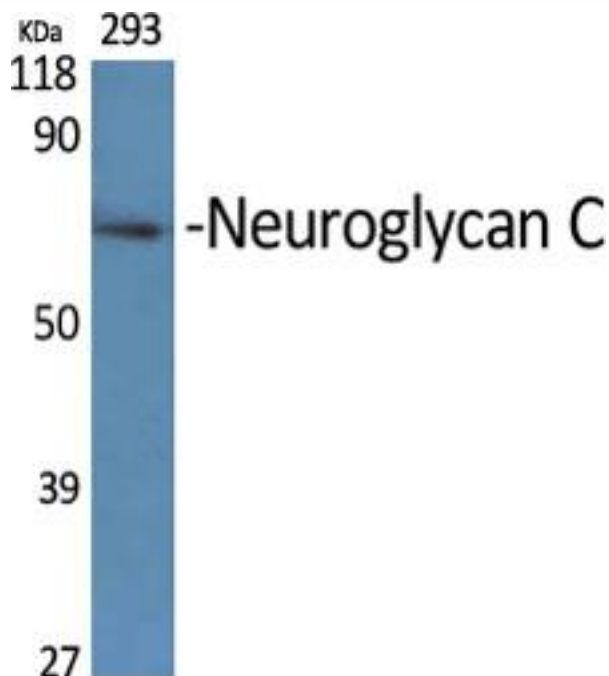
#### matters needing attention

Avoid repeated freezing and thawing!

#### Usage suggestions

This product can be used in immunological reaction related experiments. For more information, please consult technical personnel.

### Products Images



Western Blot analysis of various cells using Neuroglycan C Monoclonal Antibody