

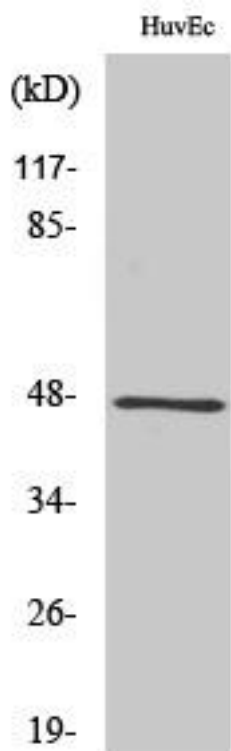


# GRIN2 Monoclonal Antibody

<b>Catalog No</b>	YP-mAb-12734
<b>Isotype</b>	IgG
<b>Reactivity</b>	Human;Rat;Mouse;
<b>Applications</b>	WB
<b>Gene Name</b>	GPRIN2
<b>Protein Name</b>	G protein-regulated inducer of neurite outgrowth 2
<b>Immunogen</b>	The antiserum was produced against synthesized peptide derived from human GPRIN2. AA range:11-60
<b>Specificity</b>	GRIN2 Monoclonal Antibody detects endogenous levels of GRIN2 protein.
<b>Formulation</b>	Liquid in PBS containing 50% glycerol, 0.5% BSA and 0.02% sodium azide.
<b>Source</b>	Monoclonal, Mouse,IgG
<b>Purification</b>	The antibody was affinity-purified from mouse antiserum by affinity-chromatography using epitope-specific immunogen.
<b>Dilution</b>	WB 1:500-1:2000
<b>Concentration</b>	1 mg/ml
<b>Purity</b>	≥90%
<b>Storage Stability</b>	-20°C/1 year
<b>Synonyms</b>	GPRIN2; KIAA0514; G protein-regulated inducer of neurite outgrowth 2; GRIN2
<b>Observed Band</b>	47kD
<b>Cell Pathway</b>	
<b>Tissue Specificity</b>	Expressed specifically in the cerebellum.
<b>Function</b>	function:May be involved in neurite outgrowth.,subunit:Interacts with activated forms of GNAO1 and GNAZ.,tissue specificity:Expressed specifically in the cerebellum.,
<b>Background</b>	function:May be involved in neurite outgrowth.,subunit:Interacts with activated forms of GNAO1 and GNAZ.,tissue specificity:Expressed specifically in the cerebellum.,
<b>matters needing attention</b>	Avoid repeated freezing and thawing!
<b>Usage suggestions</b>	This product can be used in immunological reaction related experiments. For more information, please consult technical personnel.



## Products Images



Western Blot analysis of various cells using GRIN2 Monoclonal Antibody