

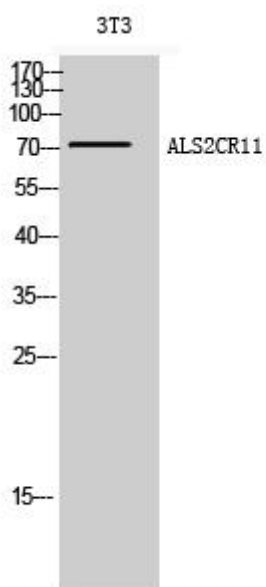


ALS2CR11 Monoclonal Antibody

| | |
|----------------------------------|---|
| Catalog No | YP-mAb-12679 |
| Isotype | IgG |
| Reactivity | Human;Rat;Mouse; |
| Applications | WB |
| Gene Name | ALS2CR11 |
| Protein Name | Amyotrophic lateral sclerosis 2 chromosomal region candidate gene 11 protein |
| Immunogen | The antiserum was produced against synthesized peptide derived from human ALS2CR11. AA range:491-540 |
| Specificity | ALS2CR11 Monoclonal Antibody detects endogenous levels of ALS2CR11 protein. |
| Formulation | Liquid in PBS containing 50% glycerol, 0.5% BSA and 0.02% sodium azide. |
| Source | Monoclonal, Mouse,IgG |
| Purification | The antibody was affinity-purified from mouse antiserum by affinity-chromatography using epitope-specific immunogen. |
| Dilution | WB 1:500-1:2000 |
| Concentration | 1 mg/ml |
| Purity | ≥90% |
| Storage Stability | -20°C/1 year |
| Synonyms | ALS2CR11; Amyotrophic lateral sclerosis 2 chromosomal region candidate gene 11 protein |
| Observed Band | 72kD |
| Cell Pathway | |
| Tissue Specificity | Testis, |
| Function | |
| Background | An autosomal recessive form of juvenile amyotrophic lateral sclerosis was originally mapped to a region of chromosome 2 that includes this gene. The encoded protein contains a calcium-dependent membrane targeting C2 domain. This domain is often found in proteins that are involved in membrane trafficking and signal transduction. [provided by RefSeq, Jun 2016], |
| matters needing attention | Avoid repeated freezing and thawing! |
| Usage suggestions | This product can be used in immunological reaction related experiments. For more information, please consult technical personnel. |



Products Images



Western Blot analysis of various cells using ALS2CR11 Monoclonal Antibody