

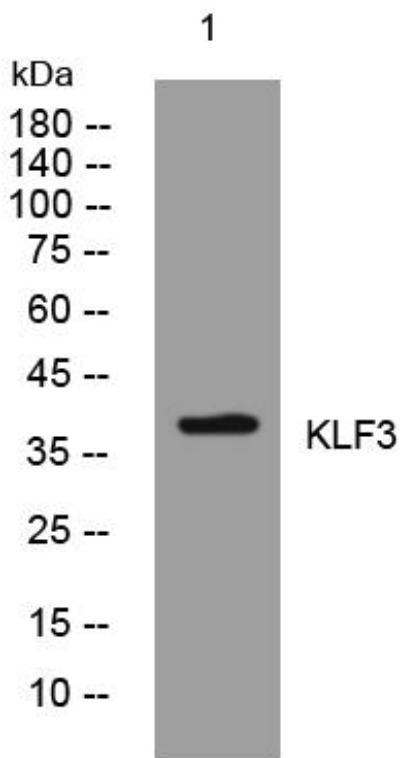


## KLF3 mouse mAb

|                                  |   |
|----------------------------------|---|
| <b>Catalog No</b>                | YP-mAb-12218  |
| <b>Isotype</b>                   | IgG   |
| <b>Reactivity</b>                | Human; Mouse  |
| <b>Applications</b>              | WB  |
| <b>Gene Name</b>                 | KLF3 BKLF   |
| <b>Protein Name</b>              | KLF3  |
| <b>Immunogen</b>                 | Synthesized peptide derived from human KLF3 AA range: 51-101  |
| <b>Specificity</b>               | This antibody detects endogenous levels of KLF3 at Human/Mouse  |
| <b>Formulation</b>               | Liquid in PBS containing 50% glycerol, 0.5% BSA and 0.02% sodium azide.   |
| <b>Source</b>                    | Monoclonal, Mouse,IgG   |
| <b>Purification</b>              | The antibody was affinity-purified from mouse antiserum by affinity-chromatography using epitope-specific immunogen.  |
| <b>Dilution</b>                  | WB 1:500-1:2000   |
| <b>Concentration</b>             | 1 mg/ml   |
| <b>Purity</b>                    | ≥90%  |
| <b>Storage Stability</b>         | -20°C/1 year  |
| <b>Synonyms</b>                  |   |
| <b>Observed Band</b>             |   |
| <b>Cell Pathway</b>              | Nucleus .   |
| <b>Tissue Specificity</b>        |   |
| <b>Function</b>                  | function: Binds to the CACCC box of erythroid cell-expressed genes. May play a role in hematopoiesis.,PTM: Sumoylated by SUMO1. Sumoylation is enhanced by PIAS1, PIAS2alpha and PIAS2beta, and PIAS4, but not by Pc2. Enhances transcriptional repression, but has no effect on DNA binding. Sumoylation on Lys-198 is the major site.,similarity: Belongs to the krueppel C2H2-type zinc-finger protein family.,similarity: Contains 3 C2H2-type zinc fingers.,subunit: Monomer., |
| <b>Background</b>                |   |
| <b>matters needing attention</b> | Avoid repeated freezing and thawing!  |
| <b>Usage suggestions</b>         | This product can be used in immunological reaction related experiments. For more information, please consult technical personnel.   |



## Products Images



Western Blot analysis of various cells using KLF3 mouse mAb