

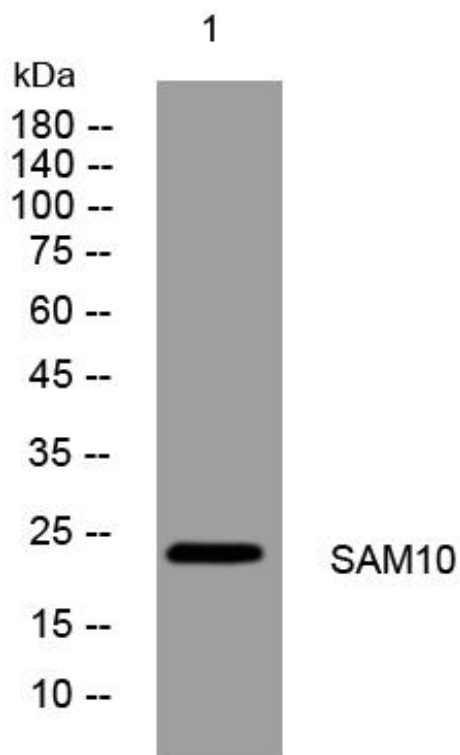


SAM10 mouse mAb

Catalog No	YP-mAb-11698
Isotype	IgG
Reactivity	Human; Mouse
Applications	WB
Gene Name	SAMD10 C20orf136
Protein Name	SAM10
Immunogen	Synthesized peptide derived from human SAM10 AA range: 13-63
Specificity	This antibody detects endogenous levels of SAM10 at Human/Mouse
Formulation	Liquid in PBS containing 50% glycerol, 0.5% BSA and 0.02% sodium azide.
Source	Monoclonal, Mouse,IgG
Purification	The antibody was affinity-purified from mouse antiserum by affinity-chromatography using epitope-specific immunogen.
Dilution	WB 1:500-1:2000
Concentration	1 mg/ml
Purity	≥90%
Storage Stability	-20°C/1 year
Synonyms	
Observed Band	
Cell Pathway	
Tissue Specificity	
Function	similarity:Contains 1 SAM (sterile alpha motif) domain.,
Background	
matters needing attention	Avoid repeated freezing and thawing!
Usage suggestions	This product can be used in immunological reaction related experiments. For more information, please consult technical personnel.



Products Images



Western Blot analysis of various cells using SAM10 mouse mAb