



# CLC4D Monoclonal Antibody

<b>Catalog No</b>	YP-mAb-07055
<b>Isotype</b>	IgG
<b>Reactivity</b>	Human;Rat;Mouse
<b>Applications</b>	WB
<b>Gene Name</b>	CLEC4D CLECSF8 MCL
<b>Protein Name</b>	C-type lectin domain family 4 member D (C-type lectin superfamily member 8) (C-type lectin-like receptor 6) (CLEC-6)
<b>Immunogen</b>	Synthesized peptide derived from part region of human protein
<b>Specificity</b>	CLC4D Monoclonal Antibody detects endogenous levels of protein.
<b>Formulation</b>	Liquid in PBS containing 50% glycerol, and 0.02% sodium azide.
<b>Source</b>	Monoclonal, Mouse,IgG
<b>Purification</b>	The antibody was affinity-purified from mouse antiserum by affinity-chromatography using epitope-specific immunogen.
<b>Dilution</b>	WB 1:500-1:2000
<b>Concentration</b>	1 mg/ml
<b>Purity</b>	≥90%
<b>Storage Stability</b>	-20°C/1 year
<b>Synonyms</b>	
<b>Observed Band</b>	23kD
<b>Cell Pathway</b>	Cell membrane ; Single-pass type II membrane protein .
<b>Tissue Specificity</b>	Expressed weakly in peripheral blood leukocytes, bone marrow and spleen. Expression is confined mostly in monocytes and macrophage and seems to be up-regulated by IL-6, IL-10, TNF-alpha and IFN-gamma.
<b>Function</b>	function:Functions as an endocytic receptor. May be involved in antigen uptake at the site of infection, either for clearance of the antigen, or for processing and further presentation to T cells.,induction:Induced by autocrine inflammatory stimuli.,online information:MCL,similarity:Contains 1 C-type lectin domain.,tissue specificity:Expressed weakly in peripheral blood leukocytes, bone marrow and spleen. Expression is confined mostly in monocytes and macrophage and seems to be up-regulated by IL-6, IL-10, TNF-alpha and IFN-gamma.,
<b>Background</b>	This gene encodes a member of the C-type lectin/C-type lectin-like domain (CTL/CTLD) superfamily. Members of this family share a common protein fold and have diverse functions, such as cell adhesion, cell-cell signalling, glycoprotein turnover, and roles in inflammation and immune response. This gene is closely linked to other CTL/CTLD superfamily members on chromosome 12p13 in the natural killer gene complex region. [provided by RefSeq, Jul 2008],



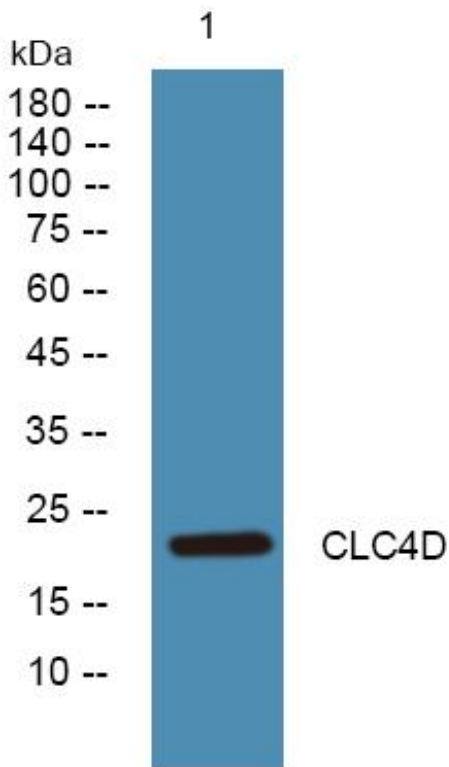
**matters needing attention**

Avoid repeated freezing and thawing!

**Usage suggestions**

This product can be used in immunological reaction related experiments. For more information, please consult technical personnel.

## Products Images



Western Blot analysis of various cells using CLC4D Monoclonal Antibody