

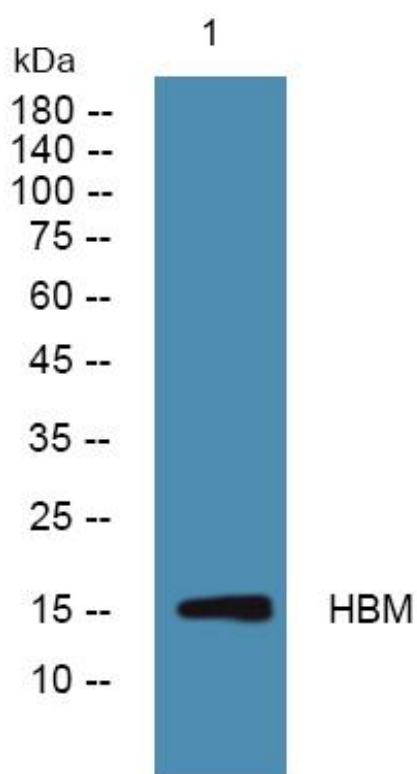


# HBM Monoclonal Antibody

<b>Catalog No</b>	YP-mAb-06990
<b>Isotype</b>	IgG
<b>Reactivity</b>	Human;Rat;Mouse;
<b>Applications</b>	WB
<b>Gene Name</b>	HBM HBAP2
<b>Protein Name</b>	Hemoglobin subunit mu (Hemoglobin mu chain) (Mu-globin)
<b>Immunogen</b>	Synthesized peptide derived from part region of human protein
<b>Specificity</b>	HBM Monoclonal Antibody detects endogenous levels of protein.
<b>Formulation</b>	Liquid in PBS containing 50% glycerol, and 0.02% sodium azide.
<b>Source</b>	Monoclonal, Mouse,IgG
<b>Purification</b>	The antibody was affinity-purified from mouse antiserum by affinity-chromatography using epitope-specific immunogen.
<b>Dilution</b>	WB 1:500-1:2000
<b>Concentration</b>	1 mg/ml
<b>Purity</b>	≥90%
<b>Storage Stability</b>	-20°C/1 year
<b>Synonyms</b>	
<b>Observed Band</b>	15kD
<b>Cell Pathway</b>	hemoglobin complex,extracellular exosome,
<b>Tissue Specificity</b>	Expressed in erythroid tissues.
<b>Function</b>	developmental stage:Maximal expression during the erythroblast terminal differentiation.,similarity:Belongs to the globin family.,tissue specificity:Expressed in erythroid tissues.,
<b>Background</b>	The human alpha globin gene cluster located on chromosome 16 spans about 30 kb and includes seven loci: 5'- zeta - pseudozeta - mu - pseudoalpha-1 - alpha-2 - alpha-1 - theta - 3'. This gene has an ORF encoding a 141 aa polypeptide which is similar to the delta globins found in reptiles and birds. This locus was originally described as a pseudogene; however, it is currently thought to be a protein-coding gene. [provided by RefSeq, Jul 2008],
<b>matters needing attention</b>	Avoid repeated freezing and thawing!

**Usage suggestions**

This product can be used in immunological reaction related experiments. For more information, please consult technical personnel.

**Products Images**

Western Blot analysis of various cells using HBM Monoclonal Antibody