



# KLRF1 Monoclonal Antibody

<b>Catalog No</b>	YP-mAb-06981
<b>Isotype</b>	IgG
<b>Reactivity</b>	Human;Rat;Mouse;
<b>Applications</b>	WB
<b>Gene Name</b>	KLRF1 CLEC5C ML
<b>Protein Name</b>	Killer cell lectin-like receptor subfamily F member 1 (Lectin-like receptor F1) (Activating coreceptor NKp80) (C-type lectin domain family 5 member C)
<b>Immunogen</b>	Synthesized peptide derived from part region of human protein
<b>Specificity</b>	KLRF1 Monoclonal Antibody detects endogenous levels of protein.
<b>Formulation</b>	Liquid in PBS containing 50% glycerol, and 0.02% sodium azide.
<b>Source</b>	Monoclonal, Mouse,IgG
<b>Purification</b>	The antibody was affinity-purified from mouse antiserum by affinity-chromatography using epitope-specific immunogen.
<b>Dilution</b>	WB 1:500-1:2000
<b>Concentration</b>	1 mg/ml
<b>Purity</b>	≥90%
<b>Storage Stability</b>	-20°C/1 year
<b>Synonyms</b>	
<b>Observed Band</b>	25kD
<b>Cell Pathway</b>	Membrane ; Single-pass type II membrane protein .
<b>Tissue Specificity</b>	Strongly expressed in peripheral blood leukocytes and spleen, with weaker expression in lymph node and adult liver, and no expression detected in bone marrow, thymus, and fetal liver. Not expressed in brain, heart, placenta, lung, kidney, skeletal muscle, and pancreas. Within peripheral blood leukocyte and immunocyte cell lines, expression was predominant in NK cells but was also detected in monocytes.
<b>Function</b>	function:Involved in the natural killer (NK)-mediated cytolysis of PHA-induced lymphoblasts.,online information:KLRF1,similarity:Contains 1 C-type lectin domain.,subunit:Homodimer.,tissue specificity:Strongly expressed in peripheral blood leukocytes and spleen, with weaker expression in lymph node and adult liver, and no expression detected in bone marrow, thymus, and fetal liver. Not expressed in brain, heart, placenta, lung, kidney, skeletal muscle, and pancreas. Within peripheral blood leukocyte and immunocyte cell lines, expression was predominant in NK cells but was also detected in monocytes.,
<b>Background</b>	KLRF1, an activating homodimeric C-type lectin-like receptor (CTLR), is expressed on nearly all natural killer (NK) cells and stimulates their cytotoxicity and cytokine release (Kuttruff et al., 2009 [PubMed 18922855]).[supplied by OMIM,



Oct 2009],

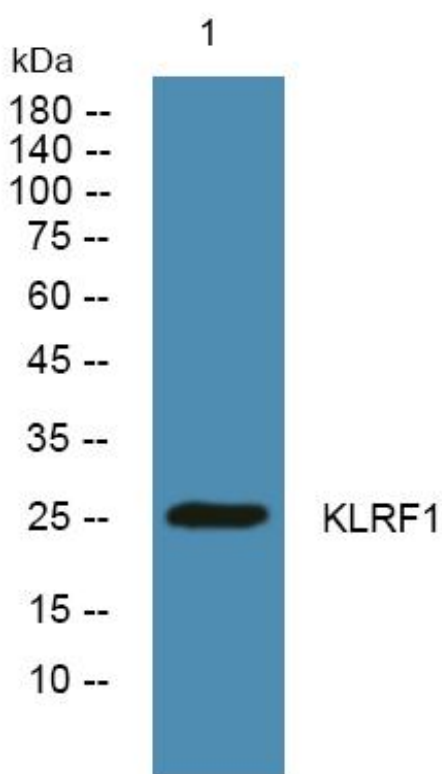
**matters needing attention**

Avoid repeated freezing and thawing!

**Usage suggestions**

This product can be used in immunological reaction related experiments. For more information, please consult technical personnel.

**Products Images**



Western Blot analysis of various cells using KLRF1 Monoclonal Antibody