

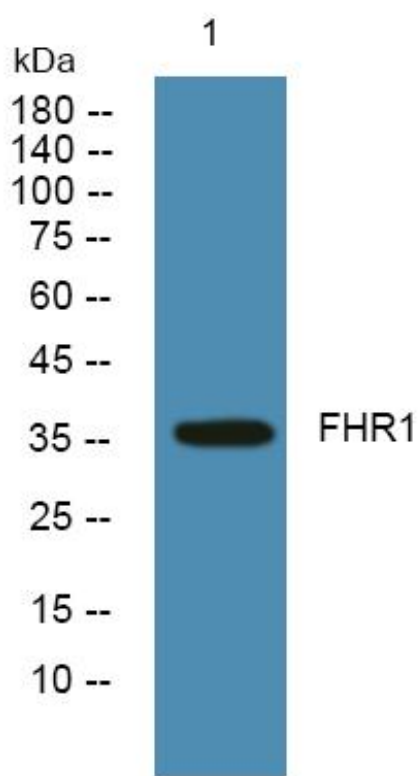


FHR1 Monoclonal Antibody

Catalog No	YP-mAb-06976
Isotype	IgG
Reactivity	Human;Rat;Mouse;
Applications	WB
Gene Name	CFHR1 CFHL CFHL1 CFHL1P CFHR1P FHR1 HFL1 HFL2
Protein Name	Complement factor H-related protein 1 (FHR-1) (H factor-like protein 1) (H-factor-like 1) (H36)
Immunogen	Synthesized peptide derived from part region of human protein
Specificity	FHR1 Monoclonal Antibody detects endogenous levels of protein.
Formulation	Liquid in PBS containing 50% glycerol, and 0.02% sodium azide.
Source	Monoclonal, Mouse,IgG
Purification	The antibody was affinity-purified from mouse antiserum by affinity-chromatography using epitope-specific immunogen.
Dilution	WB 1:500-1:2000
Concentration	1 mg/ml
Purity	≥90%
Storage Stability	-20°C/1 year
Synonyms	
Observed Band	36kD
Cell Pathway	Secreted.
Tissue Specificity	Expressed by the liver and secreted in plasma.
Function	function:Might be involved in complement regulation. Can associate with lipoproteins and may play a role in lipid metabolism.,PTM:N-glycosylated. Two forms are observed; one with a single side chain and the other with two.,similarity:Contains 5 Sushi (CCP/SCR) domains.,tissue specificity:Expressed by the liver and secreted in plasma.,
Background	This gene encodes a secreted protein belonging to the complement factor H protein family. It binds to Pseudomonas aeruginosa elongation factor Tuf together with plasminogen, which is proteolytically activated. It is proposed that Tuf acts as a virulence factor by acquiring host proteins to the pathogen surface, controlling complement, and facilitating tissue invasion. Mutations in this gene are associated with an increased risk of atypical hemolytic-uremic syndrome. [provided by RefSeq, Oct 2009],
matters needing attention	Avoid repeated freezing and thawing!

**Usage suggestions**

This product can be used in immunological reaction related experiments. For more information, please consult technical personnel.

Products Images

Western Blot analysis of various cells using FHR1 Monoclonal Antibody