



# SPAG8 Monoclonal Antibody

<b>Catalog No</b>	YP-mAb-06957
<b>Isotype</b>	IgG
<b>Reactivity</b>	Human;Rat;Mouse;
<b>Applications</b>	WB
<b>Gene Name</b>	SPAG8
<b>Protein Name</b>	Sperm-associated antigen 8 (HSD-1) (Sperm membrane protein 1) (SMP-1) (Sperm membrane protein BS-84)
<b>Immunogen</b>	Synthesized peptide derived from part region of human protein
<b>Specificity</b>	SPAG8 Monoclonal Antibody detects endogenous levels of protein.
<b>Formulation</b>	Liquid in PBS containing 50% glycerol, and 0.02% sodium azide.
<b>Source</b>	Monoclonal, Mouse,IgG
<b>Purification</b>	The antibody was affinity-purified from mouse antiserum by affinity-chromatography using epitope-specific immunogen.
<b>Dilution</b>	WB 1:500-1:2000
<b>Concentration</b>	1 mg/ml
<b>Purity</b>	≥90%
<b>Storage Stability</b>	-20°C/1 year
<b>Synonyms</b>	
<b>Observed Band</b>	46kD
<b>Cell Pathway</b>	Cytoplasm . Nucleus . Cytoplasmic vesicle, secretory vesicle, acrosome . Cytoplasm, cytoskeleton, microtubule organizing center . Cytoplasm, cytoskeleton, spindle . In mature sperm cells, detected in the acrosomal region of the head and in the middle piece of the tail (By similarity). Localized to the nucleus and cytoplasm of spermatocytes and round spermatids while, in elongating spermatids, expressed in the cytoplasm but not in the nucleus (By similarity). During the cell cycle, localized on the microtubule-organizing center (MTOC) during prophase. In metaphase, extends along spindle microtubules. In anaphase, detected on the astral microtubules and mid-zone. In telophase, remains at the mid-zone. After cytokinesis, returns to the MTOC (PubMed:19548270). .
<b>Tissue Specificity</b>	Expressed in testis (germ cells), but not in liver, kidney, prostate and small intestine.
<b>Function</b>	disease:Antibodies against SPAG8 are detected in the serum of a woman suffering from infertility.,function:May play a role in fertility and microtubule formation through interaction with RANBP9.,sequence caution:Translated as stop.,subcellular location:Acrosomal region of the head of mature sperm cells.,subunit:Interacts with RANBP9.,tissue specificity:Expressed in testis (germ cells), but not in liver, kidney, prostate and small intestine.,



## Background

The correlation of anti-sperm antibodies with cases of unexplained infertility implicates a role for these antibodies in blocking fertilization. Improved diagnosis and treatment of immunologic infertility, as well as identification of proteins for targeted contraception, are dependent on the identification and characterization of relevant sperm antigens. The protein encoded by this gene is recognized by sperm agglutinating antibodies from an infertile woman. This protein is localized in germ cells of the testis at all stages of spermatogenesis and is localized to the acrosomal region of mature spermatozoa. This protein interacts with ACT (activator of CREM in testis) and may play a role in CREM (cAMP response element modulator)-ACT-mediated gene transcription during spermatogenesis. This protein may also play a role in spermatogenesis by regulating microtubule formation and cell division. AI

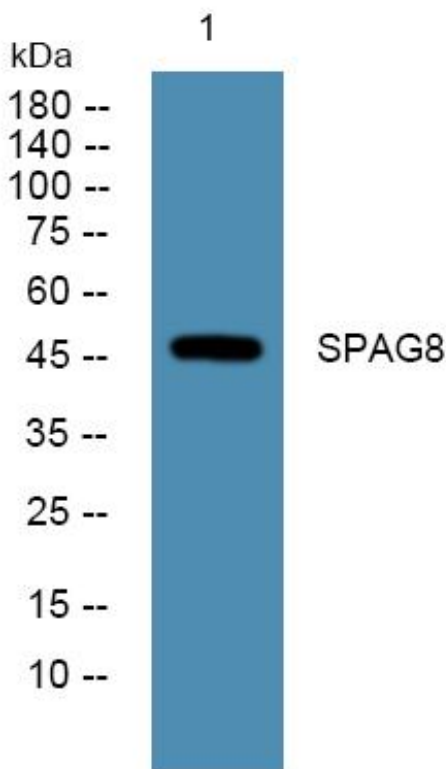
## matters needing attention

Avoid repeated freezing and thawing!

## Usage suggestions

This product can be used in immunological reaction related experiments. For more information, please consult technical personnel.

## Products Images



Western Blot analysis of various cells using SPAG8 Monoclonal Antibody