

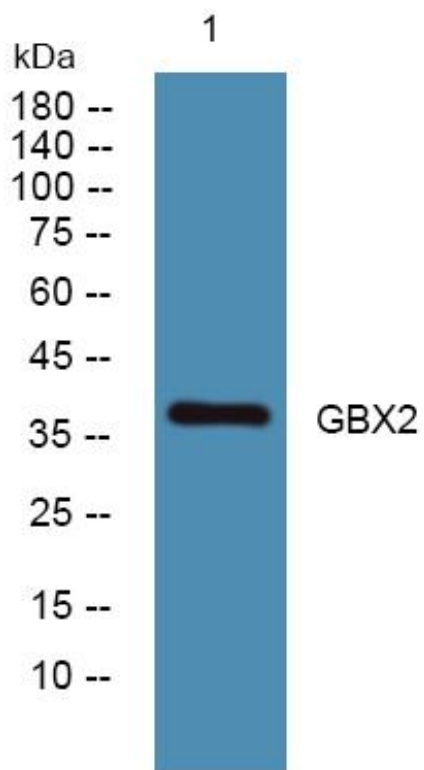


# GBX2 Monoclonal Antibody

|                                  |   |
|----------------------------------|---|
| <b>Catalog No</b>                | YP-mAb-06945  |
| <b>Isotype</b>                   | IgG   |
| <b>Reactivity</b>                | Human;Mouse   |
| <b>Applications</b>              | WB  |
| <b>Gene Name</b>                 | GBX2  |
| <b>Protein Name</b>              | Homeobox protein GBX-2 (Gastrulation and brain-specific homeobox protein 2)   |
| <b>Immunogen</b>                 | Synthesized peptide derived from part region of human protein   |
| <b>Specificity</b>               | GBX2 Monoclonal Antibody detects endogenous levels of protein.  |
| <b>Formulation</b>               | Liquid in PBS containing 50% glycerol, and 0.02% sodium azide.  |
| <b>Source</b>                    | Monoclonal, Mouse,IgG   |
| <b>Purification</b>              | The antibody was affinity-purified from mouse antiserum by affinity-chromatography using epitope-specific immunogen.                                    |
| <b>Dilution</b>                  | WB 1:500-1:2000   |
| <b>Concentration</b>             | 1 mg/ml   |
| <b>Purity</b>                    | ≥90%  |
| <b>Storage Stability</b>         | -20°C/1 year  |
| <b>Synonyms</b>                  |   |
| <b>Observed Band</b>             | 38kD  |
| <b>Cell Pathway</b>              | Nucleus .   |
| <b>Tissue Specificity</b>        | Brain,  |
| <b>Function</b>                  | function:May act as a transcription factor for cell pluripotency and differentiation in the embryo.,similarity:Contains 1 homeobox DNA-binding domain., |
| <b>Background</b>                | function:May act as a transcription factor for cell pluripotency and differentiation in the embryo.,similarity:Contains 1 homeobox DNA-binding domain., |
| <b>matters needing attention</b> | Avoid repeated freezing and thawing!  |
| <b>Usage suggestions</b>         | This product can be used in immunological reaction related experiments. For more information, please consult technical personnel.                       |



## Products Images



Western Blot analysis of various cells using GBX2 Monoclonal Antibody