

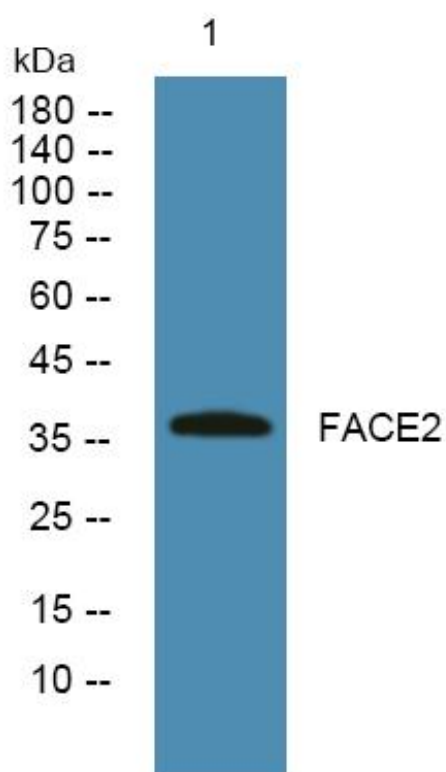


FACE2 Monoclonal Antibody

Catalog No	YP-mAb-06931
Isotype	IgG
Reactivity	Human;Rat;Mouse
Applications	WB
Gene Name	RCE1 FACE2 RCE1A RCE1B
Protein Name	CAAX prenyl protease 2 (EC 3.4.22.-) (Farnesylated proteins-converting enzyme 2) (FACE-2) (Prenyl protein-specific endoprotease 2) (RCE1 homolog) (hRCE1)
Immunogen	Synthesized peptide derived from part region of human protein
Specificity	FACE2 Monoclonal Antibody detects endogenous levels of protein.
Formulation	Liquid in PBS containing 50% glycerol, and 0.02% sodium azide.
Source	Monoclonal, Mouse,IgG
Purification	The antibody was affinity-purified from mouse antiserum by affinity-chromatography using epitope-specific immunogen.
Dilution	WB 1:500-1:2000
Concentration	1 mg/ml
Purity	≥90%
Storage Stability	-20°C/1 year
Synonyms	
Observed Band	36kD
Cell Pathway	Endoplasmic reticulum membrane ; Multi-pass membrane protein .
Tissue Specificity	Ubiquitous.
Function	function:Proteolytically removes the C-terminal three residues of farnesylated and geranylated proteins. Seems to be able to process K-Ras, N-Ras, H-Ras, RAP1B and G-gamma-1.,similarity:Belongs to the peptidase U48 family.,tissue specificity:Ubiquitous.,
Background	This gene encodes an integral membrane protein which is classified as a member of the metalloproteinase family. This enzyme is thought to function in the maintenance and processing of CAAX-type prenylated proteins. [provided by RefSeq, Jul 2008],
matters needing attention	Avoid repeated freezing and thawing!
Usage suggestions	This product can be used in immunological reaction related experiments. For more information, please consult technical personnel.



Products Images



Western Blot analysis of various cells using FACE2
Monoclonal Antibody