



# DPPA5 Monoclonal Antibody

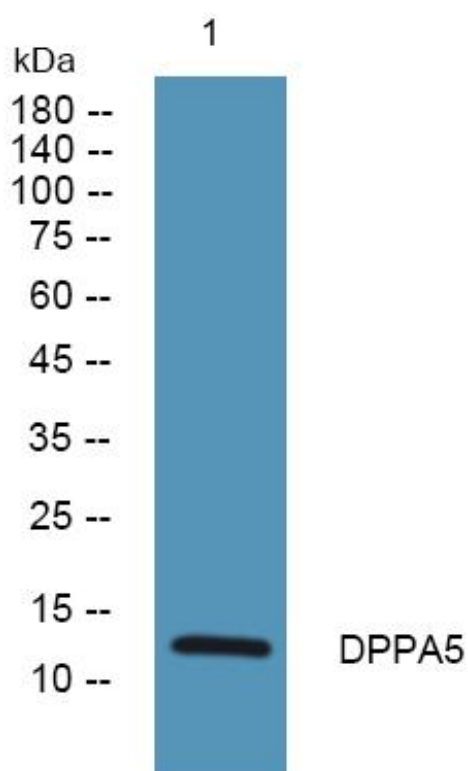
<b>Catalog No</b>	YP-mAb-06925
<b>Isotype</b>	IgG
<b>Reactivity</b>	Human;Rat;Mouse;
<b>Applications</b>	WB
<b>Gene Name</b>	DPPA5 ESG1
<b>Protein Name</b>	Developmental pluripotency-associated 5 protein (hDPPA5) (Embryonal stem cell-specific gene 1 protein) (ESG-1)
<b>Immunogen</b>	Synthesized peptide derived from part region of human protein AA range: 1-50
<b>Specificity</b>	DPPA5 Monoclonal Antibody detects endogenous levels of protein.
<b>Formulation</b>	Liquid in PBS containing 50% glycerol, and 0.02% sodium azide.
<b>Source</b>	Monoclonal, Mouse,IgG
<b>Purification</b>	The antibody was affinity-purified from mouse antiserum by affinity-chromatography using epitope-specific immunogen.
<b>Dilution</b>	WB 1:500-1:2000
<b>Concentration</b>	1 mg/ml
<b>Purity</b>	≥90%
<b>Storage Stability</b>	-20°C/1 year
<b>Synonyms</b>	
<b>Observed Band</b>	12kD
<b>Cell Pathway</b>	Cytoplasm .
<b>Tissue Specificity</b>	
<b>Function</b>	developmental stage:Expressed in primordial germ (PGC), embryonic germ (EGC) and embryonic stem (ESC) cells. Not detected in embryonic carcinoma (ECC) cells.,function:Involved in the maintenance of embryonic stem (ES) cell pluripotency. Dispensable for self-renewal of pluripotent ES cells and establishment of germ cells. Associates with specific target mRNAs.,induction:Down-regulated in differentiated embryonic stem (ESC) cells, compared with strong expression in undifferentiated ESC cells.,similarity:Belongs to the KHDC1 family.,similarity:Contains 1 KH domain.,
<b>Background</b>	This gene encodes a protein that may function in the control of cell pluripotency and early embryogenesis. Expression of this gene is a specific marker for pluripotent stem cells. Pseudogenes of this gene are located on the short arm of chromosome 10 and the long arm of chromosomes 14 and 19. [provided by RefSeq, Dec 2010],

**matters needing attention**

Avoid repeated freezing and thawing!

**Usage suggestions**

This product can be used in immunological reaction related experiments. For more information, please consult technical personnel.

**Products Images**

Western Blot analysis of various cells using DPPA5 Monoclonal Antibody