

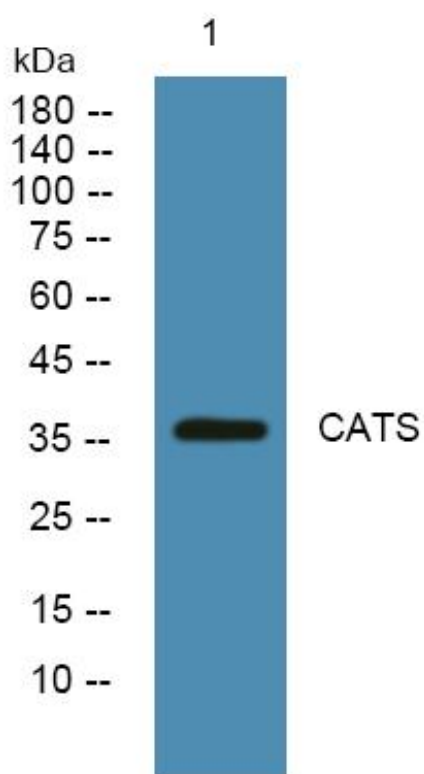


# CATS Monoclonal Antibody

Catalog No	YP-mAb-06923
Isotype	IgG
Reactivity	Human;Rat;Mouse
Applications	WB
Gene Name	CTSS
Protein Name	Cathepsin S (EC 3.4.22.27)
Immunogen	Synthesized peptide derived from part region of human protein
Specificity	CATS Monoclonal Antibody detects endogenous levels of protein.
Formulation	Liquid in PBS containing 50% glycerol, and 0.02% sodium azide.
Source	Monoclonal, Mouse,IgG
Purification	The antibody was affinity-purified from mouse antiserum by affinity-chromatography using epitope-specific immunogen.
Dilution	WB 1:500-1:2000
Concentration	1 mg/ml
Purity	≥90%
Storage Stability	-20°C/1 year
Synonyms	
Observed Band	36kD
Cell Pathway	Lysosome . Secreted . Cytoplasmic vesicle, phagosome .
Tissue Specificity	Alveolar macrophage,Pancreas,Testis,
Function	catalytic activity:Similar to cathepsin L, but with much less activity on Z-Phe-Arg- -NHMeC, and more activity on the Z-Val-Val-Arg- -Xaa compound.,function:Thiol protease. Key protease responsible for the removal of the invariant chain from MHC class II molecules. The bond-specificity of this proteinase is in part similar to the specificities of cathepsin L and cathepsin N.,similarity:Belongs to the peptidase C1 family.,subunit:Monomer.,
Background	The protein encoded by this gene, a member of the peptidase C1 family, is a lysosomal cysteine proteinase that may participate in the degradation of antigenic proteins to peptides for presentation on MHC class II molecules. The encoded protein can function as an elastase over a broad pH range in alveolar macrophages. Alternatively spliced transcript variants encoding distinct isoforms have been found for this gene. [provided by RefSeq, Dec 2010],
matters needing attention	Avoid repeated freezing and thawing!

**Usage suggestions**

This product can be used in immunological reaction related experiments. For more information, please consult technical personnel.

**Products Images**

Western Blot analysis of various cells using CATS Monoclonal Antibody