



FKBP8 Monoclonal Antibody

Catalog No	YP-mAb-06915
Isotype	IgG
Reactivity	Human;Mouse;Rat
Applications	WB
Gene Name	FKBP8 FKBP38
Protein Name	Peptidyl-prolyl cis-trans isomerase FKBP8 (PPIase FKBP8) (EC 5.2.1.8) (38 kDa FK506-binding protein) (38 kDa FKBP) (FKBP-38) (hFKBP38) (FK506-binding protein 8) (FKBP-8) (FKBPR38) (Rotamase)
Immunogen	Synthesized peptide derived from part region of human protein
Specificity	FKBP8 Monoclonal Antibody detects endogenous levels of protein.
Formulation	Liquid in PBS containing 50% glycerol, and 0.02% sodium azide.
Source	Monoclonal, Mouse,IgG
Purification	The antibody was affinity-purified from mouse antiserum by affinity-chromatography using epitope-specific immunogen.
Dilution	WB 1:500-1:2000
Concentration	1 mg/ml
Purity	≥90%
Storage Stability	-20°C/1 year
Synonyms	
Observed Band	45kD
Cell Pathway	Mitochondrion . Mitochondrion membrane ; Single-pass membrane protein; Cytoplasmic side .; [Isoform 1]: Mitochondrion membrane ; Single-pass membrane protein; Cytoplasmic side .; [Isoform 3]: Mitochondrion membrane ; Single-pass membrane protein; Cytoplasmic side .
Tissue Specificity	Widely expressed. Highest levels seen in the brain. Highly abundant in the retina.
Function	catalytic activity:Peptidylproline (omega=180) = peptidylproline (omega=0).,caution:It is uncertain whether Met-1 or Met-58 is the initiator.,cofactor:Calcium.,function:Constitutively inactive PPIase, which becomes active when bound to calmodulin and calcium. Seems to act as a chaperone for BCL2, targets it to the mitochondria and modulates its phosphorylation state. The BCL2/FKBP8/calmodulin/calcium complex probably interferes with the binding of BCL2 to its targets. The active form of FKBP8 may therefore play a role in the regulation of apoptosis.,miscellaneous:Binds the immunosuppressant FK506 only in its calmodulin/calcium activated form.,sequence caution:The first part of the cDNA maps to the same locus, but in opposite orientation.,similarity:Contains 1 PPIase FKBP-type domain.,similarity:Contains 3 TPR repeats.,subunit:Homomultimers or heteromultimers (Potential). Forms



heterodime

Background

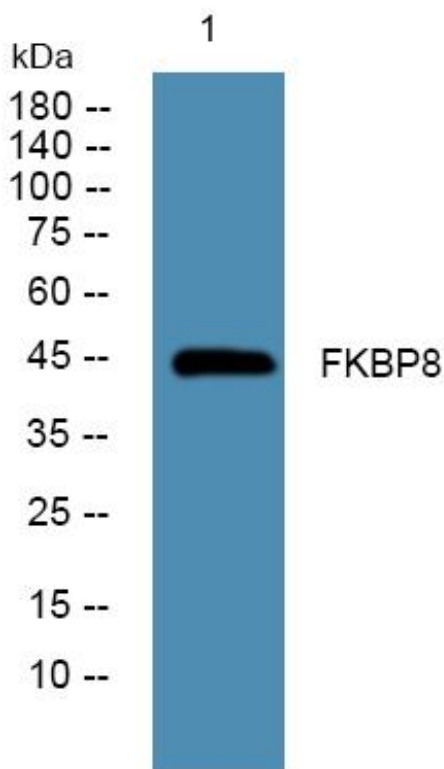
The protein encoded by this gene is a member of the immunophilin protein family, which play a role in immunoregulation and basic cellular processes involving protein folding and trafficking. Unlike the other members of the family, this encoded protein does not seem to have PPIase/rotamase activity. It may have a role in neurons associated with memory function. [provided by RefSeq, Jul 2008],

matters needing attention

Avoid repeated freezing and thawing!

Usage suggestions

This product can be used in immunological reaction related experiments. For more information, please consult technical personnel.

Products Images

Western Blot analysis of various cells using FKBP8 Monoclonal Antibody