

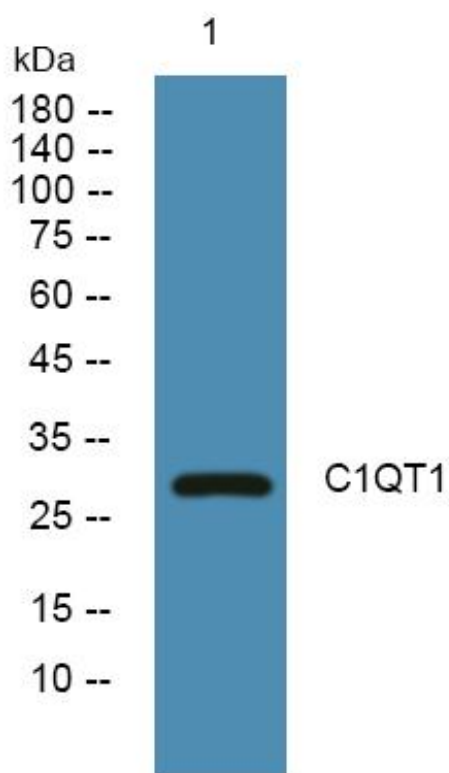


C1QT1 Monoclonal Antibody

Catalog No	YP-mAb-06886
Isotype	IgG
Reactivity	Human;Rat;Mouse
Applications	WB
Gene Name	C1QTNF1 CTRP1 UNQ310/PRO353
Protein Name	Complement C1q tumor necrosis factor-related protein 1 (G protein-coupled receptor-interacting protein) (GIP)
Immunogen	Synthesized peptide derived from part region of human protein
Specificity	C1QT1 Monoclonal Antibody detects endogenous levels of protein.
Formulation	Liquid in PBS containing 50% glycerol, and 0.02% sodium azide.
Source	Monoclonal, Mouse,IgG
Purification	The antibody was affinity-purified from mouse antiserum by affinity-chromatography using epitope-specific immunogen.
Dilution	WB 1:500-1:2000
Concentration	1 mg/ml
Purity	≥90%
Storage Stability	-20°C/1 year
Synonyms	
Observed Band	30kD
Cell Pathway	Secreted .
Tissue Specificity	Colon,Skin,
Function	similarity:Contains 1 C1q domain.,similarity:Contains 1 collagen-like domain.,
Background	similarity:Contains 1 C1q domain.,similarity:Contains 1 collagen-like domain.,
matters needing attention	Avoid repeated freezing and thawing!
Usage suggestions	This product can be used in immunological reaction related experiments. For more information, please consult technical personnel.



Products Images



Western Blot analysis of various cells using C1QT1 Monoclonal Antibody