



HBE Monoclonal Antibody

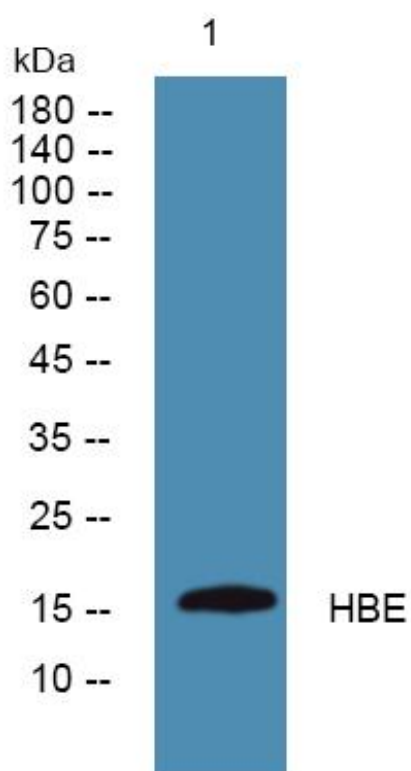
| | |
|---------------------------|---|
| Catalog No | YP-mAb-06871 |
| Isotype | IgG |
| Reactivity | Human;Rat;Mouse; |
| Applications | WB |
| Gene Name | HBE1 HBE |
| Protein Name | Hemoglobin subunit epsilon (Epsilon-globin) (Hemoglobin epsilon chain) |
| Immunogen | Synthesized peptide derived from part region of human protein |
| Specificity | HBE Monoclonal Antibody detects endogenous levels of protein. |
| Formulation | Liquid in PBS containing 50% glycerol, and 0.02% sodium azide. |
| Source | Monoclonal, Mouse,IgG |
| Purification | The antibody was affinity-purified from mouse antiserum by affinity-chromatography using epitope-specific immunogen. |
| Dilution | WB 1:500-1:2000 |
| Concentration | 1 mg/ml |
| Purity | ≥90% |
| Storage Stability | -20°C/1 year |
| Synonyms | |
| Observed Band | 16kD |
| Cell Pathway | cytosol,hemoglobin complex,blood microparticle, |
| Tissue Specificity | Red blood cells. |
| Function | function:The epsilon chain is a beta-type chain of early mammalian embryonic hemoglobin.,similarity:Belongs to the globin family.,subunit:Heterotetramer of two alpha chains and two epsilon chains in early embryonic hemoglobin Gower-2; two zeta chains and two epsilon chains in early embryonic hemoglobin Gower-1.,tissue specificity:Red blood cells., |
| Background | The epsilon globin gene (HBE) is normally expressed in the embryonic yolk sac: two epsilon chains together with two zeta chains (an alpha-like globin) constitute the embryonic hemoglobin Hb Gower I; two epsilon chains together with two alpha chains form the embryonic Hb Gower II. Both of these embryonic hemoglobins are normally supplanted by fetal, and later, adult hemoglobin. The five beta-like globin genes are found within a 45 kb cluster on chromosome 11 in the following order: 5'-epsilon - G-gamma - A-gamma - delta - beta-3'; [provided by RefSeq, Jul 2008], |

**matters needing attention**

Avoid repeated freezing and thawing!

Usage suggestions

This product can be used in immunological reaction related experiments. For more information, please consult technical personnel.

Products Images

Western Blot analysis of various cells using HBE Monoclonal Antibody