



PGRP4 Monoclonal Antibody

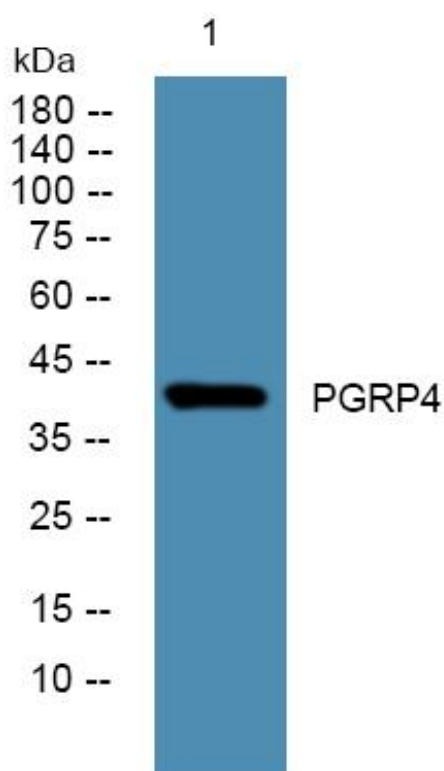
Catalog No	YP-mAb-06870
Isotype	IgG
Reactivity	Human;Mouse
Applications	WB
Gene Name	PGLYRP4 PGRPIB SBB167
Protein Name	Peptidoglycan recognition protein 4 (Peptidoglycan recognition protein I-beta) (PGLYRP1beta) (PGRP-I-beta) (Peptidoglycan recognition protein intermediate beta)
Immunogen	Synthesized peptide derived from part region of human protein AA range: 81-130
Specificity	PGRP4 Monoclonal Antibody detects endogenous levels of protein.
Formulation	Liquid in PBS containing 50% glycerol, and 0.02% sodium azide.
Source	Monoclonal, Mouse,IgG
Purification	The antibody was affinity-purified from mouse antiserum by affinity-chromatography using epitope-specific immunogen.
Dilution	WB 1:500-1:2000
Concentration	1 mg/ml
Purity	≥90%
Storage Stability	-20°C/1 year
Synonyms	
Observed Band	41kD
Cell Pathway	Secreted .
Tissue Specificity	Detected in skin epidermis, eccrine sweat glands and ducts, mucous cells in the submandibular salivary gland, mucous cells in the throat, ciliary body epithelial cells of the eye, small intestine, colon, stomach and in mature epithelial cells of the tongue (at protein level). High expression in skin and esophagus. Expressed also to a much lesser extent in the tonsils and thymus.
Function	function: Binds to murein peptidoglycans (PGN) of Gram-positive bacteria. May play a role in innate immunity., similarity: Belongs to the N-acetylmuramoyl-L-alanine amidase 2 family., tissue specificity: High expression in the esophagus. Expressed also to a much lesser extent in the tonsils and thymus.,
Background	Summary: This gene encodes a peptidoglycan recognition protein, which belongs to the N-acetylmuramoyl-L-alanine amidase 2 family. These proteins are part of the innate immune system and recognize peptidoglycan, a ubiquitous component of bacterial cell walls. This antimicrobial protein binds to murein peptidoglycans of Gram-positive bacteria. [provided by RefSeq, Oct 2014],

**matters needing attention**

Avoid repeated freezing and thawing!

Usage suggestions

This product can be used in immunological reaction related experiments. For more information, please consult technical personnel.

Products Images

Western Blot analysis of various cells using PGRP4 Monoclonal Antibody