

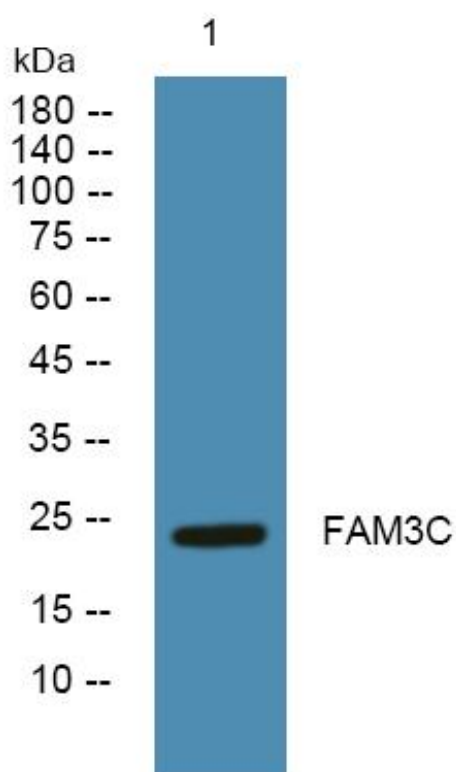


# FAM3C Monoclonal Antibody

<b>Catalog No</b>	YP-mAb-06869
<b>Isotype</b>	IgG
<b>Reactivity</b>	Human;Mouse;Rat
<b>Applications</b>	WB
<b>Gene Name</b>	FAM3C ILEI GS3786
<b>Protein Name</b>	Protein FAM3C (Interleukin-like EMT inducer)
<b>Immunogen</b>	Synthesized peptide derived from part region of human protein
<b>Specificity</b>	FAM3C Monoclonal Antibody detects endogenous levels of protein.
<b>Formulation</b>	Liquid in PBS containing 50% glycerol, and 0.02% sodium azide.
<b>Source</b>	Monoclonal, Mouse,IgG
<b>Purification</b>	The antibody was affinity-purified from mouse antiserum by affinity-chromatography using epitope-specific immunogen.
<b>Dilution</b>	WB 1:500-1:2000
<b>Concentration</b>	1 mg/ml
<b>Purity</b>	≥90%
<b>Storage Stability</b>	-20°C/1 year
<b>Synonyms</b>	
<b>Observed Band</b>	24kD
<b>Cell Pathway</b>	Secreted . Cytoplasmic vesicle . Cytoplasmic in some cancer cells.
<b>Tissue Specificity</b>	Present in most secretory epithelia (at protein level).
<b>Function</b>	similarity:Belongs to the FAM3 family.,tissue specificity:Ubiquitous.,
<b>Background</b>	This gene is a member of the family with sequence similarity 3 (FAM3) family and encodes a secreted protein with a GG domain. A change in expression of this protein has been noted in pancreatic cancer-derived cells. [provided by RefSeq, Mar 2010],
<b>matters needing attention</b>	Avoid repeated freezing and thawing!
<b>Usage suggestions</b>	This product can be used in immunological reaction related experiments. For more information, please consult technical personnel.



## Products Images



Western Blot analysis of various cells using FAM3C Monoclonal Antibody