

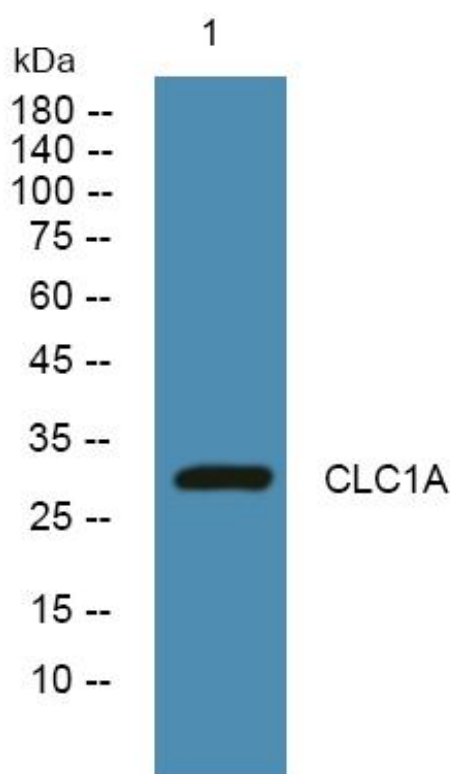


CLC1A Monoclonal Antibody

Catalog No	YP-mAb-06859
Isotype	IgG
Reactivity	Human;Mouse
Applications	WB
Gene Name	CLEC1A CLEC1 UNQ569/PRO1131
Protein Name	C-type lectin domain family 1 member A (C-type lectin-like receptor 1) (CLEC-1)
Immunogen	Synthesized peptide derived from part region of human protein
Specificity	CLC1A Monoclonal Antibody detects endogenous levels of protein.
Formulation	Liquid in PBS containing 50% glycerol, and 0.02% sodium azide.
Source	Monoclonal, Mouse,IgG
Purification	The antibody was affinity-purified from mouse antiserum by affinity-chromatography using epitope-specific immunogen.
Dilution	WB 1:500-1:2000
Concentration	1 mg/ml
Purity	≥90%
Storage Stability	-20°C/1 year
Synonyms	
Observed Band	30kD
Cell Pathway	Membrane ; Single-pass type II membrane protein .
Tissue Specificity	Expressed preferentially in dendritic cells.
Function	similarity:Contains 1 C-type lectin domain.,tissue specificity:Expressed preferentially in dendritic cells.,
Background	This gene encodes a member of the C-type lectin/C-type lectin-like domain (CTL/CTLD) superfamily. Members of this family share a common protein fold and have diverse functions, such as cell adhesion, cell-cell signaling, glycoprotein turnover, and roles in inflammation and immune response. The encoded protein may play a role in regulating dendritic cell function. This gene is closely linked to other CTL/CTLD superfamily members on chromosome 12p13 in the natural killer gene complex region. Alternative splicing results in multiple transcript variants. [provided by RefSeq, Jul 2014],
matters needing attention	Avoid repeated freezing and thawing!

**Usage suggestions**

This product can be used in immunological reaction related experiments. For more information, please consult technical personnel.

Products Images

Western Blot analysis of various cells using CLC1A Monoclonal Antibody