



# TEFF2 Monoclonal Antibody

<b>Catalog No</b>	YP-mAb-06853
<b>Isotype</b>	IgG
<b>Reactivity</b>	Human;Mouse
<b>Applications</b>	WB
<b>Gene Name</b>	TMEFF2 HPP1 TENB2 TPEF UNQ178/PRO204
<b>Protein Name</b>	Tomoregulin-2 (TR-2) (Hyperplastic polyposis protein 1) (Transmembrane protein with EGF-like and two follistatin-like domains)
<b>Immunogen</b>	Synthesized peptide derived from part region of human protein
<b>Specificity</b>	TEFF2 Monoclonal Antibody detects endogenous levels of protein.
<b>Formulation</b>	Liquid in PBS containing 50% glycerol, and 0.02% sodium azide.
<b>Source</b>	Monoclonal, Mouse,IgG
<b>Purification</b>	The antibody was affinity-purified from mouse antiserum by affinity-chromatography using epitope-specific immunogen.
<b>Dilution</b>	WB 1:500-1:2000
<b>Concentration</b>	1 mg/ml
<b>Purity</b>	≥90%
<b>Storage Stability</b>	-20°C/1 year
<b>Synonyms</b>	
<b>Observed Band</b>	41kD
<b>Cell Pathway</b>	[Isoform 1]: Membrane ; Single-pass type I membrane protein .; [Isoform 2]: Membrane ; Single-pass type I membrane protein .; [Isoform 3]: Secreted.
<b>Tissue Specificity</b>	Highly expressed in adult and fetal brain, spinal cord and prostate. Expressed in all brain regions except the pituitary gland, with highest levels in amygdala and corpus callosum. Expressed in the pericryptal myofibroblasts and other stromal cells of normal colonic mucosa. Expressed in prostate carcinoma. Down-regulated in colorectal cancer. Present in Alzheimer disease plaques (at protein level). Isoform 3 is expressed weakly in testis and at high levels in normal and cancerous prostate.
<b>Function</b>	function:May be a survival factor for hippocampal and mesencephalic neurons. The shedded form up-regulates cancer cell proliferation, probably by promoting ERK1/2 phosphorylation.,induction:Down-regulated in tumor cell lines in response to a high level of methylation in the 5' region. The CpG island methylation correlates with TMEFF2 silencing in tumor cell lines.,PTM:A soluble form (TMEFF2-ECD) is produced by proteolytic shedding. This shedding can be induced by phorbol ester or proinflammatory cytokines such as TNFalpha, and is mediated by ADAM17.,PTM:N-glycosylated. Contains chondroitin sulfate glycosaminoglycans.,sequence caution:Contaminating sequence. Mitochondrial contamination starting in position 361.,similarity:Belongs to the tomoregulin



family.,similarity:Contains 1 EGF-like domain.,similarity:Contains 2 Kazal-like domains.,tissue specificity:Highly expressed in adult and feta

#### Background

This gene encodes a member of the tomoregulin family of transmembrane proteins. This protein has been shown to function as both an oncogene and a tumor suppressor depending on the cellular context and may regulate prostate cancer cell invasion. Multiple soluble forms of this protein have been identified that arise from both an alternative splice variant and ectodomain shedding. Additionally, this gene has been found to be hypermethylated in multiple cancer types. Alternative splicing results in multiple transcript variants. [provided by RefSeq, Feb 2015],

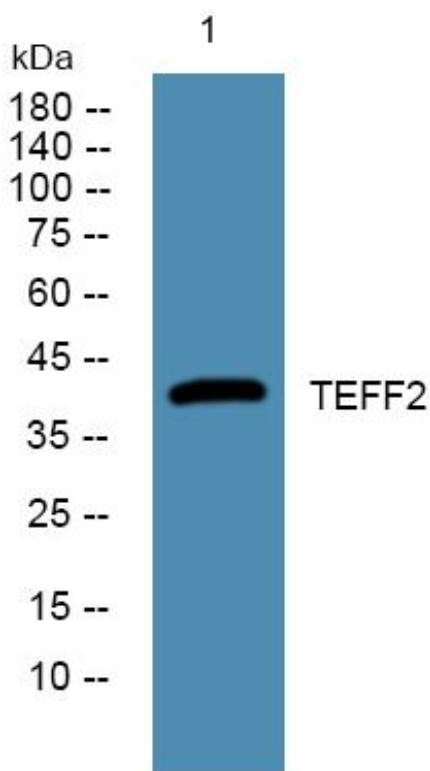
#### matters needing attention

Avoid repeated freezing and thawing!

#### Usage suggestions

This product can be used in immunological reaction related experiments. For more information, please consult technical personnel.

### Products Images



Western Blot analysis of various cells using TEFF2 Monoclonal Antibody