



# FCN1 Monoclonal Antibody

<b>Catalog No</b>	YP-mAb-06826
<b>Isotype</b>	IgG
<b>Reactivity</b>	Human;Rat;Mouse
<b>Applications</b>	WB
<b>Gene Name</b>	FCN1 FCNM
<b>Protein Name</b>	Ficolin-1 (Collagen/fibrinogen domain-containing protein 1) (Ficolin-A) (Ficolin-alpha) (M-ficolin)
<b>Immunogen</b>	Synthesized peptide derived from part region of human protein
<b>Specificity</b>	FCN1 Monoclonal Antibody detects endogenous levels of protein.
<b>Formulation</b>	Liquid in PBS containing 50% glycerol, and 0.02% sodium azide.
<b>Source</b>	Monoclonal, Mouse,IgG
<b>Purification</b>	The antibody was affinity-purified from mouse antiserum by affinity-chromatography using epitope-specific immunogen.
<b>Dilution</b>	WB 1:500-1:2000
<b>Concentration</b>	1 mg/ml
<b>Purity</b>	≥90%
<b>Storage Stability</b>	-20°C/1 year
<b>Synonyms</b>	
<b>Observed Band</b>	35kD
<b>Cell Pathway</b>	Secreted . Cell membrane ; Peripheral membrane protein ; Extracellular side . Found on the monocyte and granulocyte surface (PubMed:20400674).
<b>Tissue Specificity</b>	Peripheral blood leukocytes, monocytes and granulocytes. Also detected in spleen, lung, and thymus, may be due to the presence of tissue macrophages or trapped blood in these tissues. Not detected on lymphocytes.
<b>Function</b>	function:Involved in serum exerting lectin activity. Binds GlcNAc.,similarity:Belongs to the ficolin lectin family.,similarity:Contains 1 collagen-like domain.,similarity:Contains 1 fibrinogen C-terminal domain.,subcellular location:Found on the monocyte surface.,subunit:Homopolymer. Interacts with elastin.,tissue specificity:Peripheral blood leukocytes. Also detected in spleen, lung, and thymus, may be due to the presence of tissue macrophages or trapped blood in these tissues. Not detected on lymphocytes and granulocytes.,
<b>Background</b>	ficolin 1(FCN1) Homo sapiens The ficolin family of proteins are characterized by the presence of a leader peptide, a short N-terminal segment, followed by a collagen-like region, and a C-terminal fibrinogen-like domain. The collagen-like and the fibrinogen-like domains are also found separately in other proteins such as complement protein C1q, C-type lectins known as collectins, and tenascins.



However, all these proteins recognize different targets, and are functionally distinct. Ficolin 1 encoded by FCN1 is predominantly expressed in the peripheral blood leukocytes, and has been postulated to function as a plasma protein with elastin-binding activity. [provided by RefSeq, Jul 2008],

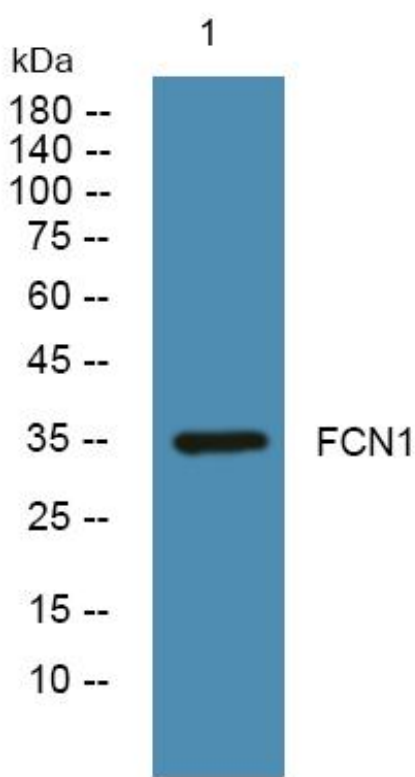
**matters needing attention**

Avoid repeated freezing and thawing!

**Usage suggestions**

This product can be used in immunological reaction related experiments. For more information, please consult technical personnel.

**Products Images**



Western Blot analysis of various cells using FCN1 Monoclonal Antibody