

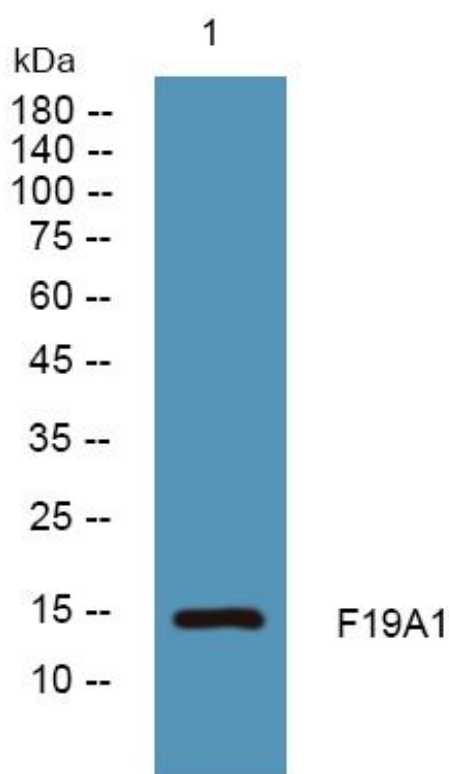


# F19A1 Monoclonal Antibody

<b>Catalog No</b>	YP-mAb-06810
<b>Isotype</b>	IgG
<b>Reactivity</b>	Human;Mouse
<b>Applications</b>	WB
<b>Gene Name</b>	FAM19A1 TAFA1
<b>Protein Name</b>	Protein FAM19A1 (Chemokine-like protein TAFA-1)
<b>Immunogen</b>	Synthesized peptide derived from part region of human protein
<b>Specificity</b>	F19A1 Monoclonal Antibody detects endogenous levels of protein.
<b>Formulation</b>	Liquid in PBS containing 50% glycerol, and 0.02% sodium azide.
<b>Source</b>	Monoclonal, Mouse,IgG
<b>Purification</b>	The antibody was affinity-purified from mouse antiserum by affinity-chromatography using epitope-specific immunogen.
<b>Dilution</b>	WB 1:500-1:2000
<b>Concentration</b>	1 mg/ml
<b>Purity</b>	≥90%
<b>Storage Stability</b>	-20°C/1 year
<b>Synonyms</b>	
<b>Observed Band</b>	14kD
<b>Cell Pathway</b>	Secreted .
<b>Tissue Specificity</b>	Brain-specific.
<b>Function</b>	similarity:Belongs to the FAM19/TAFA family.,tissue specificity:Brain-specific.,
<b>Background</b>	family with sequence similarity 19 member A1, C-C motif chemokine like(FAM19A1) Homo sapiens This gene is a member of the TAFA family which is composed of five highly homologous genes that encode small secreted proteins. These proteins contain conserved cysteine residues at fixed positions, and are distantly related to MIP-1alpha, a member of the CC-chemokine family. The TAFA proteins are predominantly expressed in specific regions of the brain, and are postulated to function as brain-specific chemokines or neurokines that act as regulators of immune and nervous cells. [provided by RefSeq, Jul 2008],
<b>matters needing attention</b>	Avoid repeated freezing and thawing!

**Usage suggestions**

This product can be used in immunological reaction related experiments. For more information, please consult technical personnel.

**Products Images**

Western Blot analysis of various cells using F19A1 Monoclonal Antibody