



# IL18 Monoclonal Antibody

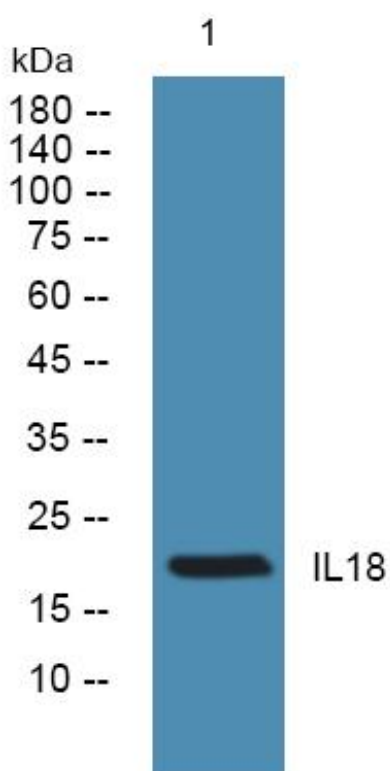
<b>Catalog No</b>	YP-mAb-06791
<b>Isotype</b>	IgG
<b>Reactivity</b>	Human;Rat;Mouse
<b>Applications</b>	WB
<b>Gene Name</b>	IL18 IGIF IL1F4
<b>Protein Name</b>	Interleukin-18 (IL-18) (Iboctadekin) (Interferon gamma-inducing factor) (IFN-gamma-inducing factor) (Interleukin-1 gamma) (IL-1 gamma)
<b>Immunogen</b>	Synthesized peptide derived from part region of human protein
<b>Specificity</b>	IL18 Monoclonal Antibody detects endogenous levels of protein.
<b>Formulation</b>	Liquid in PBS containing 50% glycerol, and 0.02% sodium azide.
<b>Source</b>	Monoclonal, Mouse,IgG
<b>Purification</b>	The antibody was affinity-purified from mouse antiserum by affinity-chromatography using epitope-specific immunogen.
<b>Dilution</b>	WB 1:500-1:2000
<b>Concentration</b>	1 mg/ml
<b>Purity</b>	≥90%
<b>Storage Stability</b>	-20°C/1 year
<b>Synonyms</b>	
<b>Observed Band</b>	21kD
<b>Cell Pathway</b>	Cytoplasm . Secreted . The precursor is cytosolic (PubMed:33883744). In response to inflammasome-activating signals, cleaved and secreted (PubMed:33883744). Mature form is secreted and released in the extracellular milieu by passing through the gasdermin-D (GSDMD) pore (PubMed:33883744). In contrast, the precursor form is not released, due to the presence of an acidic region that is proteolytically removed by CASP1 during maturation (PubMed:33883744). The secretion is dependent on protein unfolding and facilitated by the cargo receptor TMED10 (PubMed:32272059). .
<b>Tissue Specificity</b>	Liver,Peripheral blood,Urinary bladder,
<b>Function</b>	function:Augments natural killer cell activity in spleen cells and stimulates interferon gamma production in T-helper type I cells.,online information:Interleukin-1 entry,similarity:Belongs to the IL-1 family.,
<b>Background</b>	The protein encoded by this gene is a proinflammatory cytokine that augments natural killer cell activity in spleen cells, and stimulates interferon gamma production in T-helper type I cells. Alternatively spliced transcript variants encoding different isoforms have been found for this gene.[provided by RefSeq, Aug 2011],

**matters needing attention**

Avoid repeated freezing and thawing!

**Usage suggestions**

This product can be used in immunological reaction related experiments. For more information, please consult technical personnel.

**Products Images**

Western Blot analysis of various cells using IL18 Monoclonal Antibody