



# NRK Monoclonal Antibody

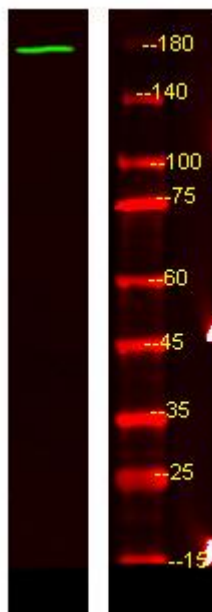
<b>Catalog No</b>	YP-mAb-06738
<b>Isotype</b>	IgG
<b>Reactivity</b>	Human;Mouse
<b>Applications</b>	WB
<b>Gene Name</b>	NRK
<b>Protein Name</b>	Nik-related protein kinase (EC 2.7.11.1)
<b>Immunogen</b>	Synthesized peptide derived from part region of human protein
<b>Specificity</b>	NRK Monoclonal Antibody detects endogenous levels of protein.
<b>Formulation</b>	Liquid in PBS containing 50% glycerol, and 0.02% sodium azide.
<b>Source</b>	Monoclonal, Mouse,IgG
<b>Purification</b>	The antibody was affinity-purified from mouse antiserum by affinity-chromatography using epitope-specific immunogen.
<b>Dilution</b>	WB 1:500-1:2000
<b>Concentration</b>	1 mg/ml
<b>Purity</b>	≥90%
<b>Storage Stability</b>	-20°C/1 year
<b>Synonyms</b>	
<b>Observed Band</b>	174kD
<b>Cell Pathway</b>	cytoplasm,integral component of membrane,
<b>Tissue Specificity</b>	Fetal kidney,Ovary,Placenta,
<b>Function</b>	catalytic activity:ATP + a protein = ADP + a phosphoprotein.,function:May phosphorylate cofilin-1 and induce actin polymerization through this process, during the late stages of embryogenesis. Involved in the TNF-alpha-induced signaling pathway.,similarity:Belongs to the protein kinase superfamily. STE Ser/Thr protein kinase family. STE20 subfamily.,similarity:Contains 1 CNH domain.,similarity:Contains 1 protein kinase domain.,
<b>Background</b>	Nik related kinase(NRK) Homo sapiens The mouse ortholog of this gene encodes a protein kinase required for JNK activation. The encoded protein may be involved in the induction of actin polymerization in late embryogenesis.[provided by RefSeq, Jun 2010],
<b>matters needing attention</b>	Avoid repeated freezing and thawing!



### Usage suggestions

This product can be used in immunological reaction related experiments. For more information, please consult technical personnel.

## Products Images



Western Blot analysis of various cells using NRK Monoclonal Antibody