

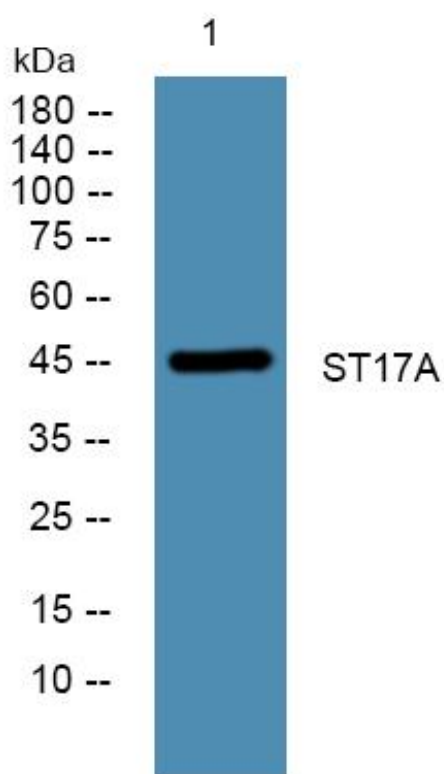


# ST17A Monoclonal Antibody

<b>Catalog No</b>	YP-mAb-06732
<b>Isotype</b>	IgG
<b>Reactivity</b>	Human;Rat;Mouse;
<b>Applications</b>	WB
<b>Gene Name</b>	STK17A DRAK1
<b>Protein Name</b>	Serine/threonine-protein kinase 17A (EC 2.7.11.1) (DAP kinase-related apoptosis-inducing protein kinase 1)
<b>Immunogen</b>	Synthesized peptide derived from part region of human protein
<b>Specificity</b>	ST17A Monoclonal Antibody detects endogenous levels of protein.
<b>Formulation</b>	Liquid in PBS containing 50% glycerol, and 0.02% sodium azide.
<b>Source</b>	Monoclonal, Mouse,IgG
<b>Purification</b>	The antibody was affinity-purified from mouse antiserum by affinity-chromatography using epitope-specific immunogen.
<b>Dilution</b>	WB 1:500-1:2000
<b>Concentration</b>	1 mg/ml
<b>Purity</b>	≥90%
<b>Storage Stability</b>	-20°C/1 year
<b>Synonyms</b>	
<b>Observed Band</b>	45kD
<b>Cell Pathway</b>	Nucleus .
<b>Tissue Specificity</b>	Highly expressed in placenta. Lower levels in heart, lung, skeletal muscle, kidney and pancreas.
<b>Function</b>	catalytic activity:ATP + a protein = ADP + a phosphoprotein.,function:Acts as a positive regulator of apoptosis.,PTM:Autophosphorylated.,similarity:Belongs to the protein kinase superfamily. CAMK Ser/Thr protein kinase family. DAP kinase subfamily.,similarity:Contains 1 protein kinase domain.,tissue specificity:Highly expressed in placenta. Lower levels in heart, lung, skeletal muscle, kidney and pancreas.,
<b>Background</b>	This gene is a member of the DAP kinase-related apoptosis-inducing protein kinase family and encodes an autophosphorylated nuclear protein with a protein kinase domain. The protein has apoptosis-inducing activity. [provided by RefSeq, Jul 2008],
<b>matters needing attention</b>	Avoid repeated freezing and thawing!

**Usage suggestions**

This product can be used in immunological reaction related experiments. For more information, please consult technical personnel.

**Products Images**

Western Blot analysis of various cells using ST17A Monoclonal Antibody