



# NFIP2 Monoclonal Antibody

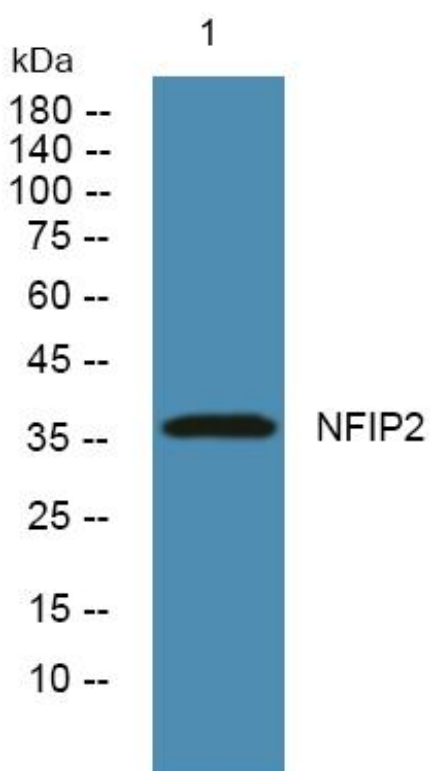
<b>Catalog No</b>	YP-mAb-06689
<b>Isotype</b>	IgG
<b>Reactivity</b>	Human;Rat;Mouse;
<b>Applications</b>	WB
<b>Gene Name</b>	NDFIP2 KIAA1165 N4WBP5A
<b>Protein Name</b>	NEDD4 family-interacting protein 2 (NEDD4 WW domain-binding protein 5A) (Putative MAPK-activating protein PM04/PM05/PM06/PM07) (Putative NF-kappa-B-activating protein 413)
<b>Immunogen</b>	Synthesized peptide derived from part region of human protein
<b>Specificity</b>	NFIP2 Monoclonal Antibody detects endogenous levels of protein.
<b>Formulation</b>	Liquid in PBS containing 50% glycerol, and 0.02% sodium azide.
<b>Source</b>	Monoclonal, Mouse,IgG
<b>Purification</b>	The antibody was affinity-purified from mouse antiserum by affinity-chromatography using epitope-specific immunogen.
<b>Dilution</b>	WB 1:500-1:2000
<b>Concentration</b>	1 mg/ml
<b>Purity</b>	≥90%
<b>Storage Stability</b>	-20°C/1 year
<b>Synonyms</b>	
<b>Observed Band</b>	36kD
<b>Cell Pathway</b>	Endosome membrane ; Multi-pass membrane protein . Golgi apparatus membrane . Endosome, multivesicular body membrane .
<b>Tissue Specificity</b>	Expressed in brain, lung, heart, skeletal muscle, kidney, liver and placenta.
<b>Function</b>	function:May be involved in endocytosis. Regulates ENaC surface expression (By similarity). May be involved in NF-kappa-B and MAPK signaling pathways.,induction:By T-cell activation.,PTM:Ubiquitinated by NEDD4 or NEDD4L; which does not affect turnover.,subunit:Interacts with NEDD4L (By similarity). Interacts with NEDD4.,tissue specificity:Expressed in brain, lung, heart, skeletal muscle, kidney, liver and placenta.,
<b>Background</b>	function:May be involved in endocytosis. Regulates ENaC surface expression (By similarity). May be involved in NF-kappa-B and MAPK signaling pathways.,induction:By T-cell activation.,PTM:Ubiquitinated by NEDD4 or NEDD4L; which does not affect turnover.,subunit:Interacts with NEDD4L (By similarity). Interacts with NEDD4.,tissue specificity:Expressed in brain, lung, heart, skeletal muscle, kidney, liver and placenta.,

**matters needing attention**

Avoid repeated freezing and thawing!

**Usage suggestions**

This product can be used in immunological reaction related experiments. For more information, please consult technical personnel.

**Products Images**

Western Blot analysis of various cells using NFIP2 Monoclonal Antibody