

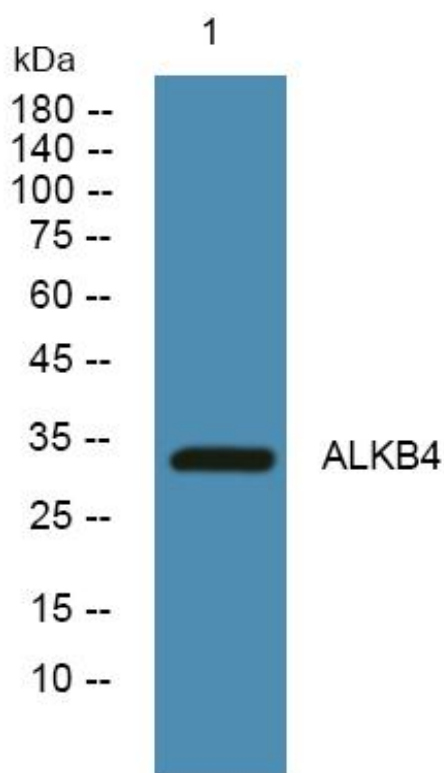


# ALKB4 Monoclonal Antibody

<b>Catalog No</b>	YP-mAb-06678
<b>Isotype</b>	IgG
<b>Reactivity</b>	Human;Mouse
<b>Applications</b>	WB
<b>Gene Name</b>	ALKBH4 ABH4
<b>Protein Name</b>	Probable alpha-ketoglutarate-dependent dioxygenase ABH4 (EC 1.14.11.-) (Alkylated DNA repair protein alkB homolog 4)
<b>Immunogen</b>	Synthesized peptide derived from part region of human protein
<b>Specificity</b>	ALKB4 Monoclonal Antibody detects endogenous levels of protein.
<b>Formulation</b>	Liquid in PBS containing 50% glycerol, and 0.02% sodium azide.
<b>Source</b>	Monoclonal, Mouse,IgG
<b>Purification</b>	The antibody was affinity-purified from mouse antiserum by affinity-chromatography using epitope-specific immunogen.
<b>Dilution</b>	WB 1:500-1:2000
<b>Concentration</b>	1 mg/ml
<b>Purity</b>	≥90%
<b>Storage Stability</b>	-20°C/1 year
<b>Synonyms</b>	
<b>Observed Band</b>	33kD
<b>Cell Pathway</b>	Cytoplasm . Nucleus . Nucleus, nucleolus . Midbody . Associates with the contractile ring and midbody. .
<b>Tissue Specificity</b>	Widely expressed, with highest expression in pancreas, ovary and spleen.
<b>Function</b>	sequence caution:Wrong choice of CDS.,similarity:Belongs to the alkB family.,
<b>Background</b>	sequence caution:Wrong choice of CDS.,similarity:Belongs to the alkB family.,
<b>matters needing attention</b>	Avoid repeated freezing and thawing!
<b>Usage suggestions</b>	This product can be used in immunological reaction related experiments. For more information, please consult technical personnel.



## Products Images



Western Blot analysis of various cells using ALKB4 Monoclonal Antibody