

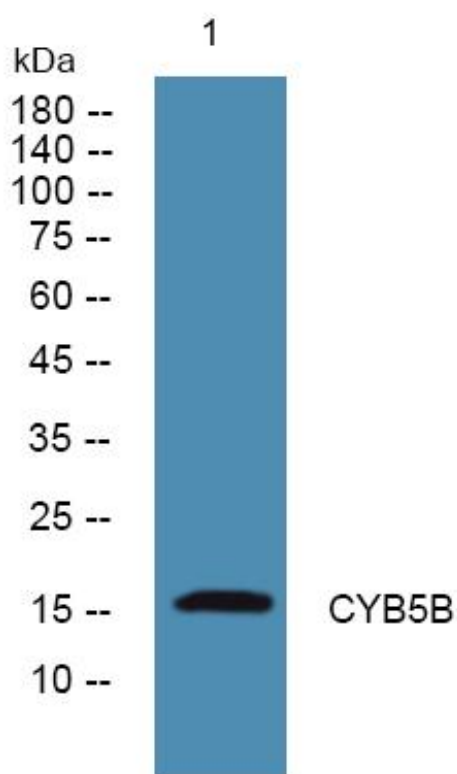


# CYB5B Monoclonal Antibody

<b>Catalog No</b>	YP-mAb-06601
<b>Isotype</b>	IgG
<b>Reactivity</b>	Human;Rat;Mouse;
<b>Applications</b>	WB
<b>Gene Name</b>	CYB5B CYB5M OMB5
<b>Protein Name</b>	Cytochrome b5 type B (Cytochrome b5 outer mitochondrial membrane isoform)
<b>Immunogen</b>	Synthesized peptide derived from human protein . at AA range: 50-130
<b>Specificity</b>	CYB5B Monoclonal Antibody detects endogenous levels of protein.
<b>Formulation</b>	Liquid in PBS containing 50% glycerol, and 0.02% sodium azide.
<b>Source</b>	Monoclonal, Mouse,IgG
<b>Purification</b>	The antibody was affinity-purified from mouse antiserum by affinity-chromatography using epitope-specific immunogen.
<b>Dilution</b>	WB 1:500-1:2000
<b>Concentration</b>	1 mg/ml
<b>Purity</b>	≥90%
<b>Storage Stability</b>	-20°C/1 year
<b>Synonyms</b>	
<b>Observed Band</b>	16kD
<b>Cell Pathway</b>	Mitochondrion outer membrane .
<b>Tissue Specificity</b>	Cervix,Lymph,Pancreas,Placenta,Testis,
<b>Function</b>	function:Cytochrome b5 is a membrane bound hemoprotein which function as an electron carrier for several membrane bound oxygenases.,similarity:Belongs to the cytochrome b5 family.,similarity:Contains 1 cytochrome b5 heme-binding domain.,subunit:Component of a complex composed of cytochrome b5, NADH-cytochrome b5 reductase (CYB5R3) and MOSC2.,
<b>Background</b>	function:Cytochrome b5 is a membrane bound hemoprotein which function as an electron carrier for several membrane bound oxygenases.,similarity:Belongs to the cytochrome b5 family.,similarity:Contains 1 cytochrome b5 heme-binding domain.,subunit:Component of a complex composed of cytochrome b5, NADH-cytochrome b5 reductase (CYB5R3) and MOSC2.,
<b>matters needing attention</b>	Avoid repeated freezing and thawing!

**Usage suggestions**

This product can be used in immunological reaction related experiments. For more information, please consult technical personnel.

**Products Images**

Western Blot analysis of various cells using CYB5B Monoclonal Antibody