

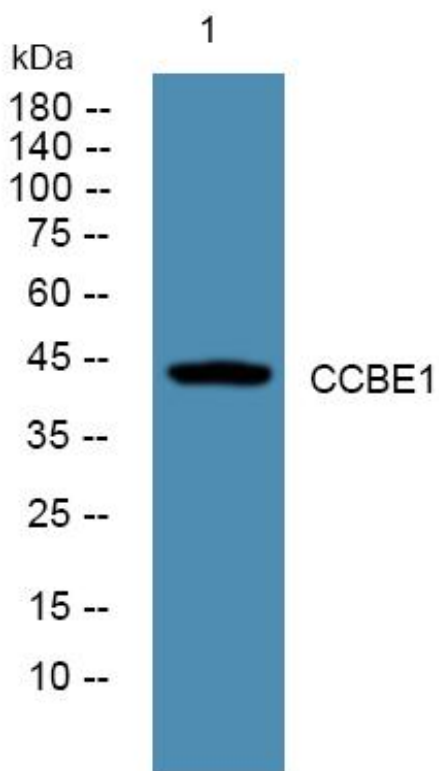


# CCBE1 Monoclonal Antibody

<b>Catalog No</b>	YP-mAb-06597
<b>Isotype</b>	IgG
<b>Reactivity</b>	Human;Rat;Mouse;
<b>Applications</b>	WB
<b>Gene Name</b>	CCBE1 KIAA1983 UNQ1921/PRO4395
<b>Protein Name</b>	Collagen and calcium-binding EGF domain-containing protein 1 (Full of fluid protein homolog)
<b>Immunogen</b>	Synthesized peptide derived from human protein . at AA range: 120-200
<b>Specificity</b>	CCBE1 Monoclonal Antibody detects endogenous levels of protein.
<b>Formulation</b>	Liquid in PBS containing 50% glycerol, and 0.02% sodium azide.
<b>Source</b>	Monoclonal, Mouse,IgG
<b>Purification</b>	The antibody was affinity-purified from mouse antiserum by affinity-chromatography using epitope-specific immunogen.
<b>Dilution</b>	WB 1:500-1:2000
<b>Concentration</b>	1 mg/ml
<b>Purity</b>	≥90%
<b>Storage Stability</b>	-20°C/1 year
<b>Synonyms</b>	
<b>Observed Band</b>	44kD
<b>Cell Pathway</b>	Secreted .
<b>Tissue Specificity</b>	Not expressed in blood or lymphatic endothelial cells.
<b>Function</b>	function:Required for lymphangioblast budding and angiogenic sprouting from venous endothelium during embryogenesis.,similarity:Belongs to the CCBE1 family.,similarity:Contains 1 EGF-like domain.,similarity:Contains 2 collagen-like domains.,tissue specificity:Not expressed in blood or lymphatic endothelial cells.,
<b>Background</b>	This gene is thought to function in extracellular matrix remodeling and migration. It is predominantly expressed in the ovary, but down regulated in ovarian cancer cell lines and primary carcinomas, suggesting its role as a tumour suppressor. Mutations in this gene have been associated with Hennekam lymphangiectasia-lymphedema syndrome, a generalized lymphatic dysplasia in humans. [provided by RefSeq, Mar 2010],
<b>matters needing attention</b>	Avoid repeated freezing and thawing!

**Usage suggestions**

This product can be used in immunological reaction related experiments. For more information, please consult technical personnel.

**Products Images**

Western Blot analysis of various cells using CCBE1 Monoclonal Antibody