



HES2 Monoclonal Antibody

Catalog No	YP-mAb-06593
Isotype	IgG
Reactivity	Human;Rat;Mouse;
Applications	WB
Gene Name	HES2 BHLHB40
Protein Name	Transcription factor HES-2 (Class B basic helix-loop-helix protein 40) (bHLHb40) (Hairy and enhancer of split 2)
Immunogen	Synthesized peptide derived from human protein . at AA range: 40-120
Specificity	HES2 Monoclonal Antibody detects endogenous levels of protein.
Formulation	Liquid in PBS containing 50% glycerol, and 0.02% sodium azide.
Source	Monoclonal, Mouse,IgG
Purification	The antibody was affinity-purified from mouse antiserum by affinity-chromatography using epitope-specific immunogen.
Dilution	WB 1:500-1:2000
Concentration	1 mg/ml
Purity	≥90%
Storage Stability	-20°C/1 year
Synonyms	
Observed Band	19kD
Cell Pathway	Nucleus .
Tissue Specificity	Expressed in placenta, pancreatic cancer, colon cancer with RER, cervical cancer, and in head and neck tumors.
Function	domain:Has a particular type of basic domain (presence of a helix-interrupting proline) that binds to the N-box (CACNAG), rather than the canonical E-box (CANNTG).,domain:The C-terminal WRPW motif is a transcriptional repression domain necessary for the interaction with Groucho/TLE family members, transcriptional corepressors recruited to specific target DNA by Hairy-related proteins.,function:Transcriptional repressor of genes that require a bHLH protein for their transcription.,similarity:Contains 1 basic helix-loop-helix (bHLH) domain.,similarity:Contains 1 Orange domain.,subunit:Transcription repression requires formation of a complex with a corepressor protein of the Groucho/TLE family.,tissue specificity:Expressed in placenta, pancreatic cancer, colon cancer with RER, cervical cancer, and in head and neck tumors.,
Background	domain:Has a particular type of basic domain (presence of a helix-interrupting proline) that binds to the N-box (CACNAG), rather than the canonical E-box (CANNTG).,domain:The C-terminal WRPW motif is a transcriptional repression domain necessary for the interaction with Groucho/TLE family members,



transcriptional corepressors recruited to specific target DNA by Hairy-related proteins.,function:Transcriptional repressor of genes that require a bHLH protein for their transcription.,similarity:Contains 1 basic helix-loop-helix (bHLH) domain.,similarity:Contains 1 Orange domain.,subunit:Transcription repression requires formation of a complex with a corepressor protein of the Groucho/TLE family.,tissue specificity:Expressed in placenta, pancreatic cancer, colon cancer with RER, cervical cancer, and in head and neck tumors.,

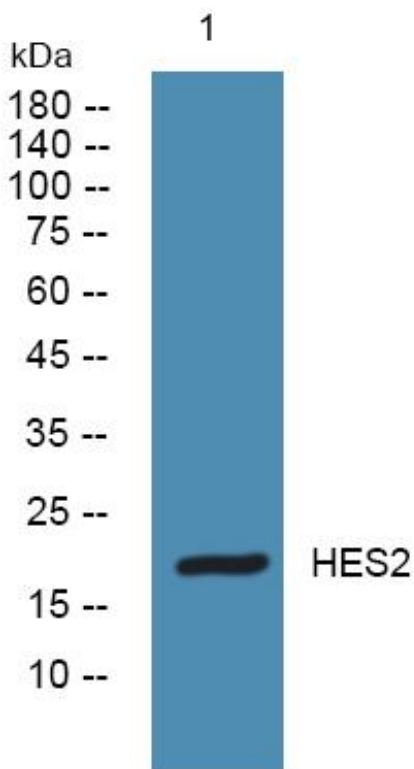
matters needing attention

Avoid repeated freezing and thawing!

Usage suggestions

This product can be used in immunological reaction related experiments. For more information, please consult technical personnel.

Products Images



Western Blot analysis of various cells using HES2 Monoclonal Antibody