

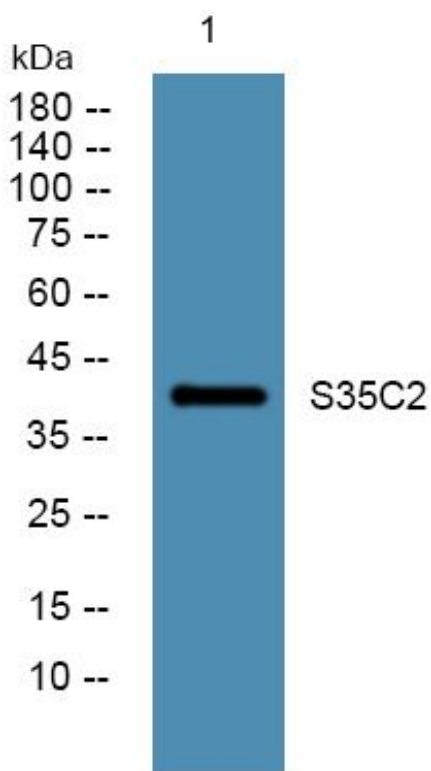


S35C2 Monoclonal Antibody

| | |
|----------------------------------|---|
| Catalog No | YP-mAb-06577 |
| Isotype | IgG |
| Reactivity | Human;Rat;Mouse; |
| Applications | WB |
| Gene Name | SLC35C2 C20orf5 OVCOV1 CGI-15 |
| Protein Name | Solute carrier family 35 member C2 (Ovarian cancer-overexpressed gene 1 protein) |
| Immunogen | Synthesized peptide derived from part region of human protein |
| Specificity | S35C2 Monoclonal Antibody detects endogenous levels of protein. |
| Formulation | Liquid in PBS containing 50% glycerol, and 0.02% sodium azide. |
| Source | Monoclonal, Mouse,IgG |
| Purification | The antibody was affinity-purified from mouse antiserum by affinity-chromatography using epitope-specific immunogen. |
| Dilution | WB 1:500-1:2000 |
| Concentration | 1 mg/ml |
| Purity | ≥90% |
| Storage Stability | -20°C/1 year |
| Synonyms | |
| Observed Band | 40kD |
| Cell Pathway | Membrane ; Multi-pass membrane protein . Golgi apparatus, cis-Golgi network membrane . Endoplasmic reticulum-Golgi intermediate compartment membrane . |
| Tissue Specificity | Ubiquitously expressed although the level of expression is tissue dependent. Overexpressed in ovarian cancer. |
| Function | function:May play an important role in the cellular response to tissue hypoxia.,induction:In hypoxic trophoblast cells.,similarity:Belongs to the TPT transporter family. SLC35C subfamily.,tissue specificity:Ubiquitously expressed although the level of expression is tissue dependent. Overexpressed in ovarian cancer., |
| Background | This gene encodes a member of the triose-phosphate transporter protein family. This gene is regulated by oxygen tension, is induced in hypoxic trophoblast cells, and is overexpressed in ovarian cancer. Alternative splicing results in multiple transcript variants. A pseudogene of this gene has been defined on the X chromosome. [provided by RefSeq, Jul 2013], |
| matters needing attention | Avoid repeated freezing and thawing! |

**Usage suggestions**

This product can be used in immunological reaction related experiments. For more information, please consult technical personnel.

Products Images

Western Blot analysis of various cells using S35C2 Monoclonal Antibody