



MED20 Monoclonal Antibody

Catalog No	YP-mAb-06576
Isotype	IgG
Reactivity	Human;Mouse;Rat
Applications	WB
Gene Name	MED20 TRFP
Protein Name	Mediator of RNA polymerase II transcription subunit 20 (Mediator complex subunit 20) (TRF-proximal protein homolog) (hTRFP)
Immunogen	Synthesized peptide derived from human protein . at AA range: 60-140
Specificity	MED20 Monoclonal Antibody detects endogenous levels of protein.
Formulation	Liquid in PBS containing 50% glycerol, and 0.02% sodium azide.
Source	Monoclonal, Mouse,IgG
Purification	The antibody was affinity-purified from mouse antiserum by affinity-chromatography using epitope-specific immunogen.
Dilution	WB 1:500-1:2000
Concentration	1 mg/ml
Purity	≥90%
Storage Stability	-20°C/1 year
Synonyms	
Observed Band	23kD
Cell Pathway	Nucleus .
Tissue Specificity	Liver,Prostate,Testis,Uterus,
Function	function:Component of the Mediator complex, a coactivator involved in the regulated transcription of nearly all RNA polymerase II-dependent genes. Mediator functions as a bridge to convey information from gene-specific regulatory proteins to the basal RNA polymerase II transcription machinery. Mediator is recruited to promoters by direct interactions with regulatory proteins and serves as a scaffold for the assembly of a functional preinitiation complex with RNA polymerase II and the general transcription factors.,similarity:Belongs to the Mediator complex subunit 20 family.,subunit:Interacts with PPARG (By similarity). Component of the Mediator complex, which is composed of MED1, MED4, MED6, MED7, MED8, MED9, MED10, MED11, MED12, MED13, MED13L, MED14, MED15, MED16, MED17, MED18, MED19, MED20, MED21, MED22, MED23, MED24, MED25, MED26, MED27, MED29, MED30, MED31, CCNC, CDK8 and CDC2L6/CDK
Background	This gene encodes a component of the mediator complex (also known as TRAP, SMCC, DRIP, or ARC), a transcriptional coactivator complex thought to be



required for the expression of almost all genes. The mediator complex is recruited by transcriptional activators or nuclear receptors to induce gene expression, by interacting with RNA polymerase II and promoting the formation of a transcriptional pre-initiation complex. A mutation in this gene has been associated with a novel infantile-onset neurodegenerative movement disorder. Alternatively spliced transcript variants have been identified. [provided by RefSeq, Mar 2015],

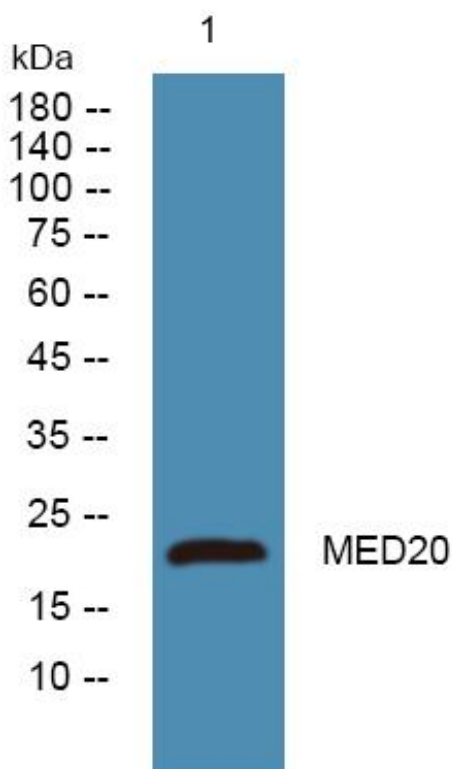
matters needing attention

Avoid repeated freezing and thawing!

Usage suggestions

This product can be used in immunological reaction related experiments. For more information, please consult technical personnel.

Products Images



Western Blot analysis of various cells using MED20 Monoclonal Antibody