



# MIXL1 Monoclonal Antibody

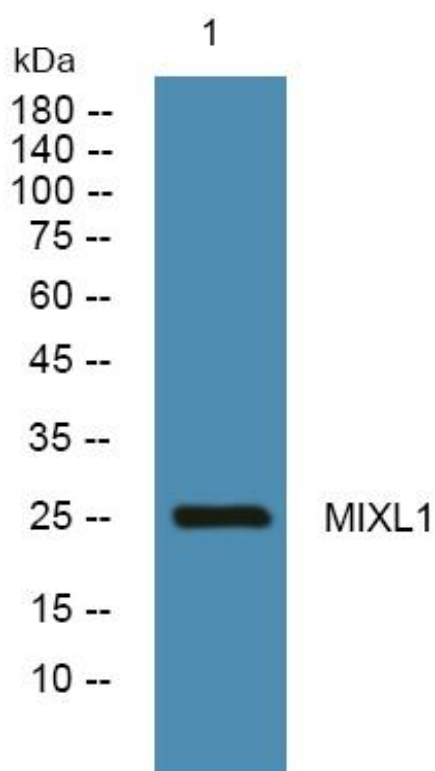
<b>Catalog No</b>	YP-mAb-06571
<b>Isotype</b>	IgG
<b>Reactivity</b>	Human;Mouse
<b>Applications</b>	WB
<b>Gene Name</b>	MIXL1 MIXL
<b>Protein Name</b>	Homeobox protein MIXL1 (Homeodomain protein MIX) (hMix) (MIX1 homeobox-like protein 1) (Mix.1 homeobox-like protein)
<b>Immunogen</b>	Synthesized peptide derived from human protein . at AA range: 90-170
<b>Specificity</b>	MIXL1 Monoclonal Antibody detects endogenous levels of protein.
<b>Formulation</b>	Liquid in PBS containing 50% glycerol, and 0.02% sodium azide.
<b>Source</b>	Monoclonal, Mouse,IgG
<b>Purification</b>	The antibody was affinity-purified from mouse antiserum by affinity-chromatography using epitope-specific immunogen.
<b>Dilution</b>	WB 1:500-1:2000
<b>Concentration</b>	1 mg/ml
<b>Purity</b>	≥90%
<b>Storage Stability</b>	-20°C/1 year
<b>Synonyms</b>	
<b>Observed Band</b>	25kD
<b>Cell Pathway</b>	Nucleus .
<b>Tissue Specificity</b>	Restricted to progenitors and secondary lymph tissues. In normal hematopoiesis, it is restricted to immature B- and T-lymphoid cells. Present in differentiating embryonic stem cells (at protein level).
<b>Function</b>	function:Transcription factor that play a central role in proper axial mesendoderm morphogenesis and endoderm formation. Required for efficient differentiation of cells from the primitive streak stage to blood, by acting early in the recruitment and/or expansion of mesodermal progenitors to the hemangioblastic and hematopoietic lineages. Also involved in the morphogenesis of the heart and the gut during embryogenesis. Acts as a negative regulator of brachyury expression.,PTM:Phosphorylated at multiple sites.,similarity:Belongs to the paired homeobox family.,similarity:Contains 1 homeobox DNA-binding domain.,tissue specificity:Restricted to progenitors and secondary lymph tissues. In normal hematopoiesis, it is restricted to immature B-and T-lymphoid cells. Present in differentiating embryonic stem cells (at protein level).,
<b>Background</b>	Mix paired-like homeobox(MIXL1) Homo sapiens Homeodomain proteins, such as MIXL1, are transcription factors that regulate cell fate during development (Hart et al., 2005 [PubMed 15982639]).[supplied by OMIM, Mar 2008],

**matters needing attention**

Avoid repeated freezing and thawing!

**Usage suggestions**

This product can be used in immunological reaction related experiments. For more information, please consult technical personnel.

**Products Images**

Western Blot analysis of various cells using MIXL1 Monoclonal Antibody