

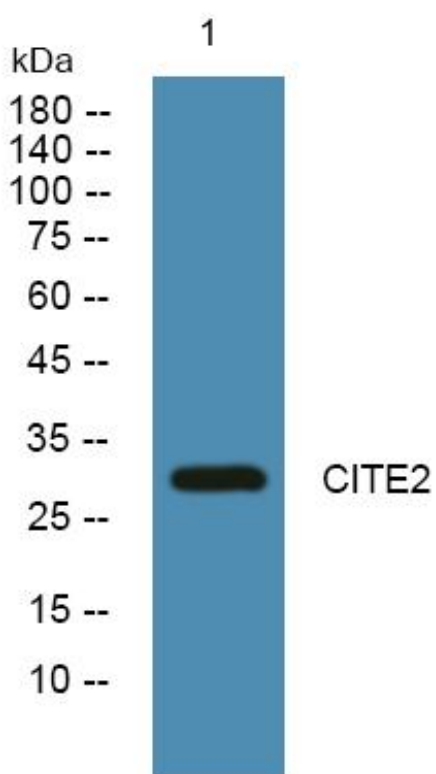


CITE2 Monoclonal Antibody

Catalog No	YP-mAb-06559
Isotype	IgG
Reactivity	Human;Mouse
Applications	WB
Gene Name	CITED2 MRG1
Protein Name	Cbp/p300-interacting transactivator 2 (MSG-related protein 1) (MRG-1) (P35srj)
Immunogen	Synthesized peptide derived from human protein . at AA range: 190-270
Specificity	CITE2 Monoclonal Antibody detects endogenous levels of protein.
Formulation	Liquid in PBS containing 50% glycerol, and 0.02% sodium azide.
Source	Monoclonal, Mouse,IgG
Purification	The antibody was affinity-purified from mouse antiserum by affinity-chromatography using epitope-specific immunogen.
Dilution	WB 1:500-1:2000
Concentration	1 mg/ml
Purity	≥90%
Storage Stability	-20°C/1 year
Synonyms	
Observed Band	29kD
Cell Pathway	Nucleus . Colocalizes with EP300 in dot-like structures.
Tissue Specificity	Pancreas,
Function	function:Interferes with the binding of transcription factors HIF-1a and STAT2 to p300/CBP.,induction:By hypoxia and deferoxamine.,similarity:Belongs to the CITED family.,subunit:Binds to the p300/CBP CH1 region.,
Background	Cbp/p300 interacting transactivator with Glu/Asp rich carboxy-terminal domain 2(CITED2) Homo sapiens The protein encoded by this gene inhibits transactivation of HIF1A-induced genes by competing with binding of hypoxia-inducible factor 1-alpha to p300-CH1. Mutations in this gene are a cause of cardiac septal defects. Alternatively spliced transcript variants encoding multiple isoforms have been observed for this gene. [provided by RefSeq, May 2012],
matters needing attention	Avoid repeated freezing and thawing!

**Usage suggestions**

This product can be used in immunological reaction related experiments. For more information, please consult technical personnel.

Products Images

Western Blot analysis of various cells using CITE2 Monoclonal Antibody