



DUX5 Monoclonal Antibody

Catalog No	YP-mAb-06550
Isotype	IgG
Reactivity	Human;Rat;Mouse;
Applications	WB
Gene Name	DUX5
Protein Name	Double homeobox protein 5
Immunogen	Synthesized peptide derived from human protein . at AA range: 10-90
Specificity	DUX5 Monoclonal Antibody detects endogenous levels of protein.
Formulation	Liquid in PBS containing 50% glycerol, and 0.02% sodium azide.
Source	Monoclonal, Mouse,IgG
Purification	The antibody was affinity-purified from mouse antiserum by affinity-chromatography using epitope-specific immunogen.
Dilution	WB 1:500-1:2000
Concentration	1 mg/ml
Purity	≥90%
Storage Stability	-20°C/1 year
Synonyms	
Observed Band	21kD
Cell Pathway	Nucleus .
Tissue Specificity	Expressed in hepatoma Hep3B cells.
Function	developmental stage:Expressed in fetal tissue.,domain:Homeobox domain 2 confers nuclear targeting.,function:Probable transcription activator. Binds the P5 DNA element sequence 5'-GATCTGAGTCTAATTGAGAATTACTGTAC-3',miscellaneous:DUX genes are present in 3.3-kilobase elements, a tandem repeat family scattered in the genome found on the short arms of all acrocentric chromosomes as well as on several other chromosomes.,miscellaneous:DUX genes are present in 3.3-kilobase elements, a tandem repeat family scattered in the genome found on the short arms of all acrocentric chromosomes as well as on several other chromosomes. May be functional despite lack of introns and a poly(A) addition signal.,similarity:Belongs to the paired homeobox family.,similarity:Contains 2 homeobox DNA-binding domains.,subcellular location:Actively transported through the nuclear pore complex (NPC).,tissue specificity:Ex
Background	double homeobox 5(DUX5) Homo sapiens The human genome contains hundreds of repeats of the 3.3-kb family in regions associated with



heterochromatin. The DUX gene family, including DUX5, resides within these 3.3-kb repeated elements (Beckers et al., 2001 [PubMed 11245978]). See DUX4 (MIM 606009).[supplied by OMIM, Mar 2008],

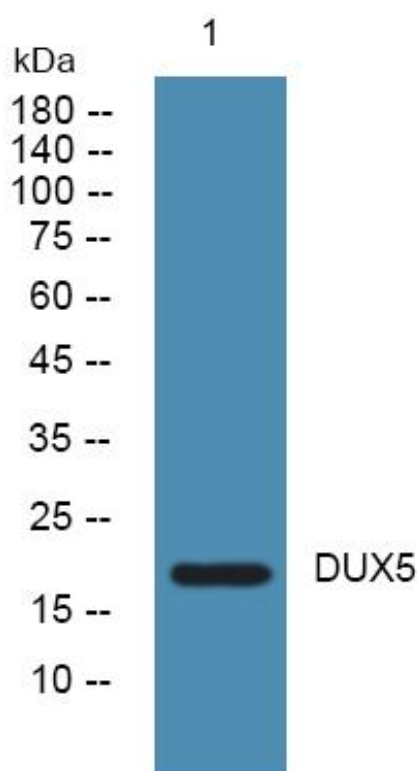
matters needing attention

Avoid repeated freezing and thawing!

Usage suggestions

This product can be used in immunological reaction related experiments. For more information, please consult technical personnel.

Products Images



Western Blot analysis of various cells using DUX5 Monoclonal Antibody