

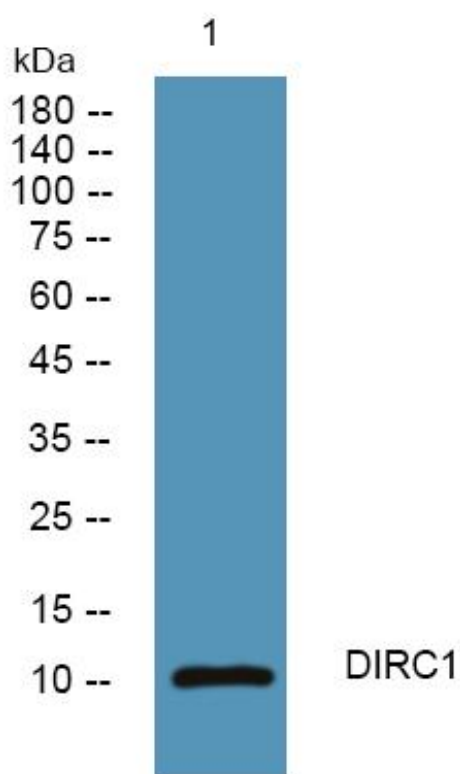


# DIRC1 Monoclonal Antibody

<b>Catalog No</b>	YP-mAb-06543
<b>Isotype</b>	IgG
<b>Reactivity</b>	Human;Rat;Mouse;
<b>Applications</b>	WB
<b>Gene Name</b>	DIRC1
<b>Protein Name</b>	Disrupted in renal carcinoma protein 1 (Disrupted in renal cancer protein)
<b>Immunogen</b>	Synthesized peptide derived from human protein . at AA range: 20-100
<b>Specificity</b>	DIRC1 Monoclonal Antibody detects endogenous levels of protein.
<b>Formulation</b>	Liquid in PBS containing 50% glycerol, and 0.02% sodium azide.
<b>Source</b>	Monoclonal, Mouse,IgG
<b>Purification</b>	The antibody was affinity-purified from mouse antiserum by affinity-chromatography using epitope-specific immunogen.
<b>Dilution</b>	WB 1:500-1:2000
<b>Concentration</b>	1 mg/ml
<b>Purity</b>	≥90%
<b>Storage Stability</b>	-20°C/1 year
<b>Synonyms</b>	
<b>Observed Band</b>	11kD
<b>Cell Pathway</b>	
<b>Tissue Specificity</b>	Expressed at low steady-state level in adult placenta, testis, ovary, prostate, fetal kidney, spleen and skeletal muscle.
<b>Function</b>	disease:A chromosomal aberration involving DIRC1 is found in familial renal cell carcinoma 1-related translocation t(2;3)(q33;q21) (RCC1).,tissue specificity:Expressed at low steady-state level in adult placenta, testis, ovary, prostate, fetal kidney, spleen and skeletal muscle.,
<b>Background</b>	This gene consists of two exons and encodes a 104aa protein. Disruption of this gene by translocation t(2;3)(q33;q21) is associated with familial clear cell renal cancer. [provided by RefSeq, Sep 2010],
<b>matters needing attention</b>	Avoid repeated freezing and thawing!
<b>Usage suggestions</b>	This product can be used in immunological reaction related experiments. For more information, please consult technical personnel.



## Products Images



Western Blot analysis of various cells using DIRC1 Monoclonal Antibody