

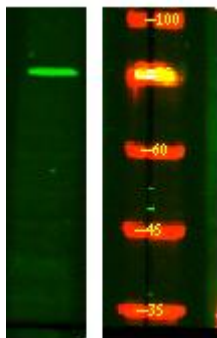


NUFP2 Monoclonal Antibody

Catalog No	YP-mAb-06517
Isotype	IgG
Reactivity	Human;Mouse
Applications	WB
Gene Name	NUFIP2 KIAA1321 PIG1
Protein Name	Nuclear fragile X mental retardation-interacting protein 2 (82 kDa FMRP-interacting protein) (82-FIP) (Cell proliferation-inducing gene 1 protein) (FMRP-interacting protein 2)
Immunogen	Synthesized peptide derived from human protein . at AA range: 180-260
Specificity	NUFP2 Monoclonal Antibody detects endogenous levels of protein.
Formulation	Liquid in PBS containing 50% glycerol, and 0.02% sodium azide.
Source	Monoclonal, Mouse,IgG
Purification	The antibody was affinity-purified from mouse antiserum by affinity-chromatography using epitope-specific immunogen.
Dilution	WB 1:500-1:2000
Concentration	1 mg/ml
Purity	≥90%
Storage Stability	-20°C/1 year
Synonyms	
Observed Band	76kD
Cell Pathway	Nucleus . Cytoplasm . Cytoplasm, Stress granule . Distribution is cell cycle-modulated, being cytoplasmic in the G2/M phase and accumulating in nucleus during the G1 phase (PubMed:12837692). .
Tissue Specificity	Brain,Cervix carcinoma,Epithelium,PCR rescued clones,T-cell,Uterus,
Function	function:Binds RNA.,PTM:Phosphorylated upon DNA damage, probably by ATM or ATR.,subcellular location:Distribution is cell cycle-modulated, being cytoplasmic in the G2/M phase and accumulating in nucleus during the G1 phase.,subunit:Interacts with FMRP.,
Background	function:Binds RNA.,PTM:Phosphorylated upon DNA damage, probably by ATM or ATR.,subcellular location:Distribution is cell cycle-modulated, being cytoplasmic in the G2/M phase and accumulating in nucleus during the G1 phase.,subunit:Interacts with FMRP.,
matters needing attention	Avoid repeated freezing and thawing!

**Usage suggestions**

This product can be used in immunological reaction related experiments. For more information, please consult technical personnel.

Products Images

Western Blot analysis of various cells using NUFP2 Monoclonal Antibody