

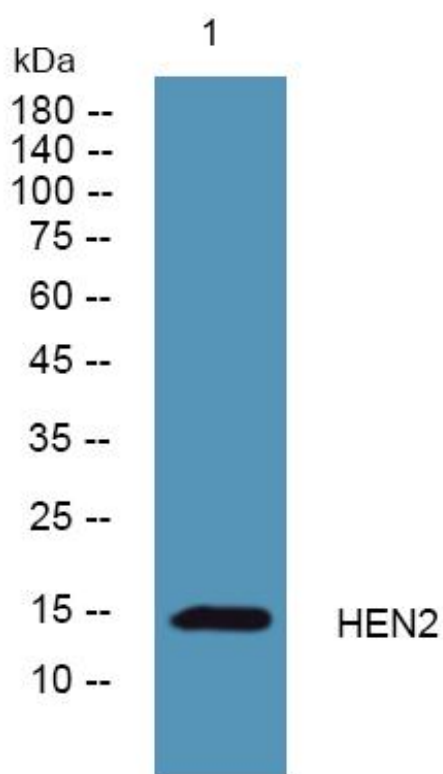


HEN2 Monoclonal Antibody

| | |
|----------------------------------|---|
| Catalog No | YP-mAb-06493 |
| Isotype | IgG |
| Reactivity | Human;Mouse |
| Applications | WB |
| Gene Name | NHLH2 BHLHA34 HEN2 KIAA0490 |
| Protein Name | Helix-loop-helix protein 2 (HEN-2) (Class A basic helix-loop-helix protein 34) (bHLHa34) (Nescient helix loop helix 2) (NSCL-2) |
| Immunogen | Synthesized peptide derived from human protein . at AA range: 30-110 |
| Specificity | HEN2 Monoclonal Antibody detects endogenous levels of protein. |
| Formulation | Liquid in PBS containing 50% glycerol, and 0.02% sodium azide. |
| Source | Monoclonal, Mouse,IgG |
| Purification | The antibody was affinity-purified from mouse antiserum by affinity-chromatography using epitope-specific immunogen. |
| Dilution | WB 1:500-1:2000 |
| Concentration | 1 mg/ml |
| Purity | ≥90% |
| Storage Stability | -20°C/1 year |
| Synonyms | |
| Observed Band | 14kD |
| Cell Pathway | Nucleus . |
| Tissue Specificity | Brain, |
| Function | function:May serve as DNA-binding protein and may be involved in the control of cell-type determination, possibly within the developing nervous system.,similarity:Contains 1 basic helix-loop-helix (bHLH) domain.,subunit:Efficient DNA binding requires dimerization with another bHLH protein., |
| Background | function:May serve as DNA-binding protein and may be involved in the control of cell-type determination, possibly within the developing nervous system.,similarity:Contains 1 basic helix-loop-helix (bHLH) domain.,subunit:Efficient DNA binding requires dimerization with another bHLH protein., |
| matters needing attention | Avoid repeated freezing and thawing! |

**Usage suggestions**

This product can be used in immunological reaction related experiments. For more information, please consult technical personnel.

Products Images

Western Blot analysis of various cells using HEN2 Monoclonal Antibody