

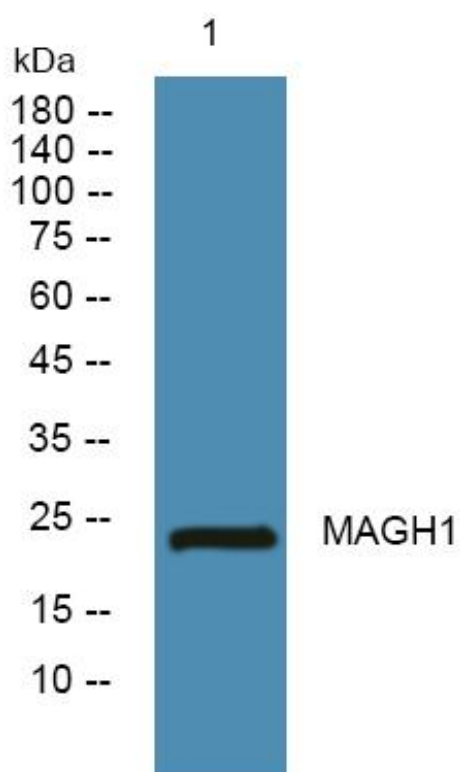


# MAGH1 Monoclonal Antibody

<b>Catalog No</b>	YP-mAb-06482
<b>Isotype</b>	IgG
<b>Reactivity</b>	Human;Mouse;Rat
<b>Applications</b>	WB
<b>Gene Name</b>	MAGEH1 APR1
<b>Protein Name</b>	Melanoma-associated antigen H1 (Apoptosis-related protein 1) (APR-1) (MAGE-H1 antigen) (Restin)
<b>Immunogen</b>	Synthesized peptide derived from human protein . at AA range: 10-90
<b>Specificity</b>	MAGH1 Monoclonal Antibody detects endogenous levels of protein.
<b>Formulation</b>	Liquid in PBS containing 50% glycerol, and 0.02% sodium azide.
<b>Source</b>	Monoclonal, Mouse,IgG
<b>Purification</b>	The antibody was affinity-purified from mouse antiserum by affinity-chromatography using epitope-specific immunogen.
<b>Dilution</b>	WB 1:500-1:2000
<b>Concentration</b>	1 mg/ml
<b>Purity</b>	≥90%
<b>Storage Stability</b>	-20°C/1 year
<b>Synonyms</b>	
<b>Observed Band</b>	24kD
<b>Cell Pathway</b>	cytoplasm,
<b>Tissue Specificity</b>	Brain,Lung,Testis,
<b>Function</b>	similarity:Contains 1 MAGE domain.,
<b>Background</b>	This gene belongs to the non-CT (non cancer/testis) subgroup of the melanoma-associated antigen (MAGE) superfamily. The encoded protein is likely associated with apoptosis, cell cycle arrest, growth inhibition or cell differentiation. The protein may be involved in the atRA (all-trans retinoic acid) signaling through the STAT1-alpha (signal transducer and activator of transcription 1-alpha) pathway. [provided by RefSeq, Aug 2013],
<b>matters needing attention</b>	Avoid repeated freezing and thawing!
<b>Usage suggestions</b>	This product can be used in immunological reaction related experiments. For more information, please consult technical personnel.



## Products Images



Western Blot analysis of various cells using MAGH1 Monoclonal Antibody