

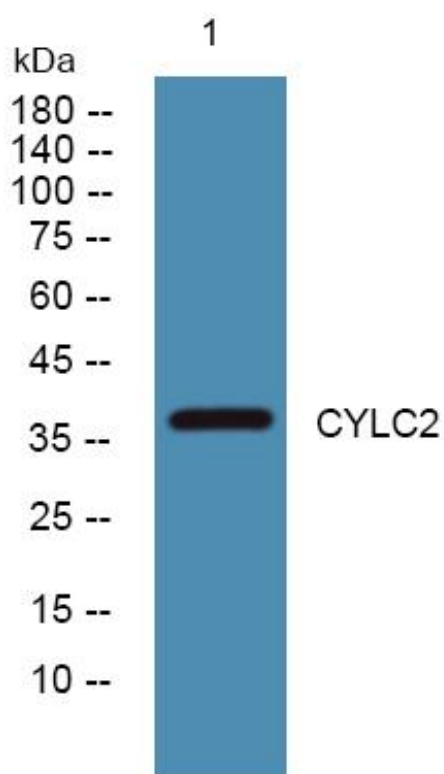


# CYLC2 Monoclonal Antibody

<b>Catalog No</b>	YP-mAb-06459
<b>Isotype</b>	IgG
<b>Reactivity</b>	Human;Rat;Mouse;
<b>Applications</b>	WB
<b>Gene Name</b>	CYLC2 CYL2
<b>Protein Name</b>	Cylicin-2 (Cylicin II) (Multiple-band polypeptide II)
<b>Immunogen</b>	Synthesized peptide derived from human protein . at AA range: 280-360
<b>Specificity</b>	CYLC2 Monoclonal Antibody detects endogenous levels of protein.
<b>Formulation</b>	Liquid in PBS containing 50% glycerol, and 0.02% sodium azide.
<b>Source</b>	Monoclonal, Mouse,IgG
<b>Purification</b>	The antibody was affinity-purified from mouse antiserum by affinity-chromatography using epitope-specific immunogen.
<b>Dilution</b>	WB 1:500-1:2000
<b>Concentration</b>	1 mg/ml
<b>Purity</b>	≥90%
<b>Storage Stability</b>	-20°C/1 year
<b>Synonyms</b>	
<b>Observed Band</b>	38kD
<b>Cell Pathway</b>	Cytoplasm, cytoskeleton, perinuclear theca, calyx. Sperm head cytoskeletal structure.
<b>Tissue Specificity</b>	Testis.
<b>Function</b>	function:Possible architectural role during spermatogenesis. May be involved in spermatid differentiation.,subcellular location:Sperm head cytoskeletal structure.,tissue specificity:Testis.,
<b>Background</b>	Cylicin II (CYCL2) is specifically expressed in testis and is part of the cytoskeletal calyx of mammalian sperm heads. Cylicin II may play a role in the morphogenesis of the sperm head. [provided by RefSeq, Jul 2008],
<b>matters needing attention</b>	Avoid repeated freezing and thawing!
<b>Usage suggestions</b>	This product can be used in immunological reaction related experiments. For more information, please consult technical personnel.



## Products Images



Western Blot analysis of various cells using CYLC2  
Monoclonal Antibody