

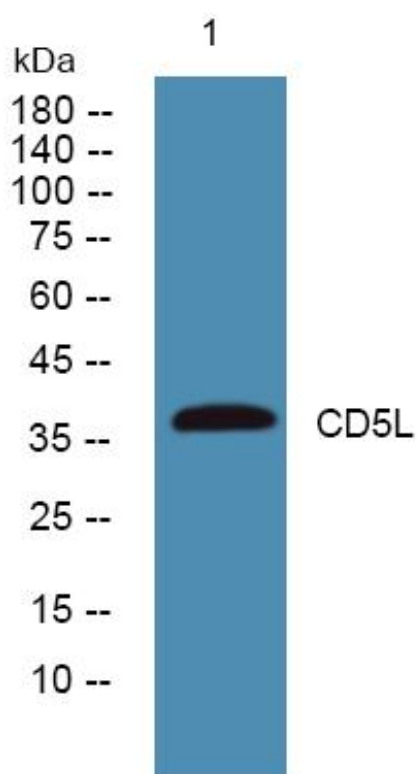


CD5L Monoclonal Antibody

Catalog No	YP-mAb-06442
Isotype	IgG
Reactivity	Human;Mouse
Applications	WB
Gene Name	CD5L API6 UNQ203/PRO229
Protein Name	CD5 antigen-like (CT-2) (IgM-associated peptide) (SP-alpha)
Immunogen	Synthesized peptide derived from human protein . at AA range: 220-300
Specificity	CD5L Monoclonal Antibody detects endogenous levels of protein.
Formulation	Liquid in PBS containing 50% glycerol, and 0.02% sodium azide.
Source	Monoclonal, Mouse,IgG
Purification	The antibody was affinity-purified from mouse antiserum by affinity-chromatography using epitope-specific immunogen.
Dilution	WB 1:500-1:2000
Concentration	1 mg/ml
Purity	≥90%
Storage Stability	-20°C/1 year
Synonyms	
Observed Band	38kD
Cell Pathway	Secreted . Cytoplasm . Secreted by macrophages and circulates in the blood (PubMed:24223991, PubMed:24804991). Transported in the cytoplasm via CD36-mediated endocytosis (By similarity). .
Tissue Specificity	Expressed in spleen, lymph node, thymus, bone marrow, and fetal liver, but not in non-lymphoid tissues.
Function	function:May play a role in the regulation of the immune system. Seems to play a role as an inhibitor of apoptosis.,similarity:Contains 3 SRCR domains.,subunit:Associated with IgM.,tissue specificity:Expressed in spleen, lymph node, thymus, bone marrow, and fetal liver, but not in non-lymphoid tissues.,
Background	function:May play a role in the regulation of the immune system. Seems to play a role as an inhibitor of apoptosis.,similarity:Contains 3 SRCR domains.,subunit:Associated with IgM.,tissue specificity:Expressed in spleen, lymph node, thymus, bone marrow, and fetal liver, but not in non-lymphoid tissues.,
matters needing attention	Avoid repeated freezing and thawing!

**Usage suggestions**

This product can be used in immunological reaction related experiments. For more information, please consult technical personnel.

Products Images

Western Blot analysis of various cells using CD5L Monoclonal Antibody