

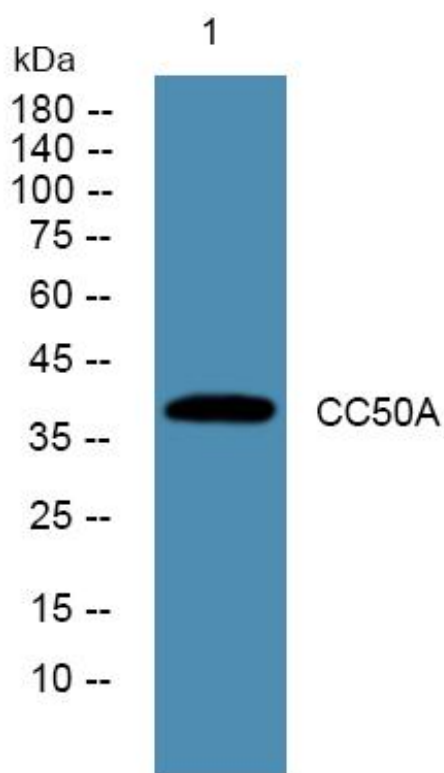


# CC50A Monoclonal Antibody

<b>Catalog No</b>	YP-mAb-06428
<b>Isotype</b>	IgG
<b>Reactivity</b>	Human;Mouse;Rat
<b>Applications</b>	WB
<b>Gene Name</b>	TMEM30A C6orf67 CDC50A
<b>Protein Name</b>	Cell cycle control protein 50A (Transmembrane protein 30A)
<b>Immunogen</b>	Synthesized peptide derived from human protein . at AA range: 110-190
<b>Specificity</b>	CC50A Monoclonal Antibody detects endogenous levels of protein.
<b>Formulation</b>	Liquid in PBS containing 50% glycerol, and 0.02% sodium azide.
<b>Source</b>	Monoclonal, Mouse,IgG
<b>Purification</b>	The antibody was affinity-purified from mouse antiserum by affinity-chromatography using epitope-specific immunogen.
<b>Dilution</b>	WB 1:500-1:2000
<b>Concentration</b>	1 mg/ml
<b>Purity</b>	≥90%
<b>Storage Stability</b>	-20°C/1 year
<b>Synonyms</b>	
<b>Observed Band</b>	39kD
<b>Cell Pathway</b>	Membrane ; Multi-pass membrane protein . Cell membrane. Golgi apparatus. Cytoplasmic vesicle, secretory vesicle membrane . Apical cell membrane .
<b>Tissue Specificity</b>	Amygdala,Brain,Liver,Lymph node,Testis,
<b>Function</b>	similarity:Belongs to the CDC50/LEM3 family.,
<b>Background</b>	similarity:Belongs to the CDC50/LEM3 family.,
<b>matters needing attention</b>	Avoid repeated freezing and thawing!
<b>Usage suggestions</b>	This product can be used in immunological reaction related experiments. For more information, please consult technical personnel.



## Products Images



Western Blot analysis of various cells using CC50A Monoclonal Antibody