



WFDC1 Monoclonal Antibody

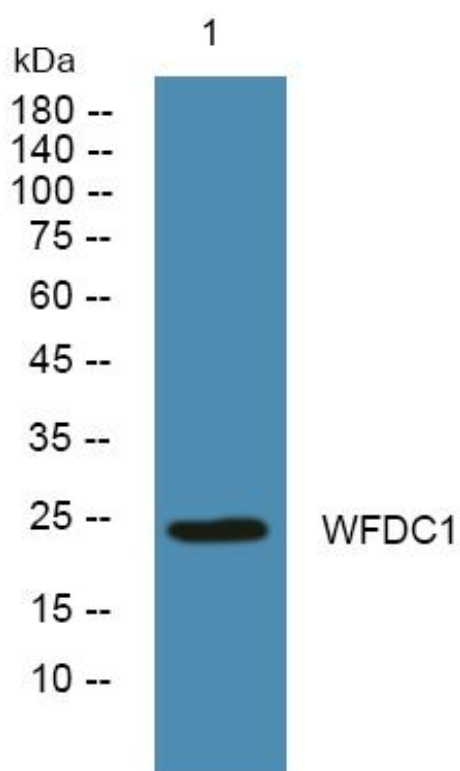
| | |
|---------------------------|--|
| Catalog No | YP-mAb-06400 |
| Isotype | IgG |
| Reactivity | Human;Rat;Mouse |
| Applications | WB |
| Gene Name | WFDC1 PS20 |
| Protein Name | WAP four-disulfide core domain protein 1 (Prostate stromal protein ps20) (ps20 growth inhibitor) |
| Immunogen | Synthesized peptide derived from part region of human protein |
| Specificity | WFDC1 Monoclonal Antibody detects endogenous levels of protein. |
| Formulation | Liquid in PBS containing 50% glycerol, and 0.02% sodium azide. |
| Source | Monoclonal, Mouse,IgG |
| Purification | The antibody was affinity-purified from mouse antiserum by affinity-chromatography using epitope-specific immunogen. |
| Dilution | WB 1:500-1:2000 |
| Concentration | 1 mg/ml |
| Purity | ≥90% |
| Storage Stability | -20°C/1 year |
| Synonyms | |
| Observed Band | 24kD |
| Cell Pathway | Secreted . |
| Tissue Specificity | Colon,Kidney,Placenta,Prostate,Stomach,Uterus, |
| Function | function:Has growth inhibitory activity.,similarity:Contains 1 WAP domain., |
| Background | WAP four-disulfide core domain 1(WFDC1) Homo sapiens This gene encodes a member of the WAP-type four disulfide core domain family. The WAP-type four-disulfide core domain contains eight cysteines forming four disulfide bonds at the core of the protein, and functions as a protease inhibitor in many family members. This gene is mapped to chromosome 16q24, an area of frequent loss of heterozygosity in cancers, including prostate, breast and hepatocellular cancers and Wilms's tumor. This gene is downregulated in many cancer types and may be involved in the inhibition of cell proliferation. The encoded protein may also play a role in the susceptibility of certain CD4 memory T cells to human immunodeficiency virus infection. Alternative splicing results in multiple transcript variants. [provided by RefSeq, Sep 2013], |

**matters needing attention**

Avoid repeated freezing and thawing!

Usage suggestions

This product can be used in immunological reaction related experiments. For more information, please consult technical personnel.

Products Images

Western Blot analysis of various cells using WFDC1 Monoclonal Antibody