



# CCG8 Monoclonal Antibody

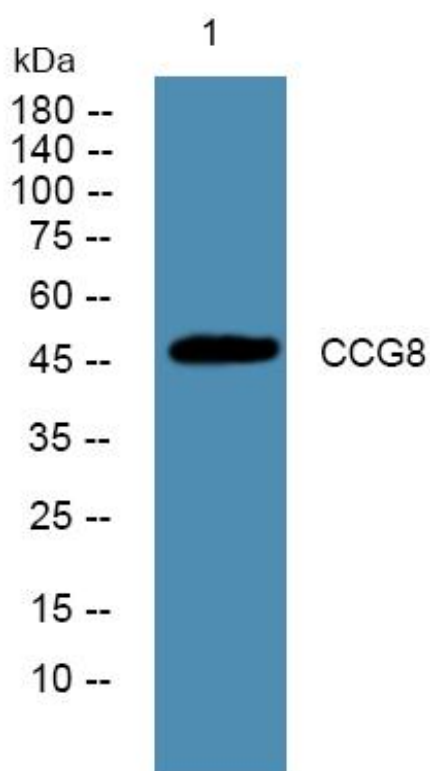
Catalog No	YP-mAb-06394
Isotype	IgG
Reactivity	Human;Mouse;Rat
Applications	WB
Gene Name	CACNG8 CACNG6
Protein Name	Voltage-dependent calcium channel gamma-8 subunit (Neuronal voltage-gated calcium channel gamma-8 subunit) (Transmembrane AMPAR regulatory protein gamma-8) (TARP gamma-8)
Immunogen	Synthesized peptide derived from human protein . at AA range: 140-220
Specificity	CCG8 Monoclonal Antibody detects endogenous levels of protein.
Formulation	Liquid in PBS containing 50% glycerol, and 0.02% sodium azide.
Source	Monoclonal, Mouse,IgG
Purification	The antibody was affinity-purified from mouse antiserum by affinity-chromatography using epitope-specific immunogen.
Dilution	WB 1:500-1:2000
Concentration	1 mg/ml
Purity	≥90%
Storage Stability	-20°C/1 year
Synonyms	
Observed Band	46kD
Cell Pathway	Cell membrane ; Multi-pass membrane protein . Cell junction, synapse, postsynaptic density membrane .
Tissue Specificity	Detected in heart left ventricle.
Function	function:Thought to stabilize the calcium channel in an inactivated (closed) state.,similarity:Belongs to the PMP-22/EMP/MP20 family. CACNG subfamily.,subunit:The L-type calcium channel is composed of five subunits: alpha-1, alpha-2/delta, beta and gamma.,
Background	calcium voltage-gated channel auxiliary subunit gamma 8(CACNG8) Homo sapiens The protein encoded by this gene is a type I transmembrane AMPA receptor regulatory protein (TARP). TARPs regulate both trafficking and channel gating of the AMPA receptors. This gene is part of a functionally diverse eight-member protein subfamily of the PMP-22/EMP/MP20 family and is located in a cluster with two family members, a type II TARP and a calcium channel gamma subunit. The mRNA for this gene is believed to initiate translation from a non-AUG (CUG) start codon. [provided by RefSeq, Dec 2010],

**matters needing attention**

Avoid repeated freezing and thawing!

**Usage suggestions**

This product can be used in immunological reaction related experiments. For more information, please consult technical personnel.

**Products Images**

Western Blot analysis of various cells using CCG8 Monoclonal Antibody