



# VATE2 Monoclonal Antibody

<b>Catalog No</b>	YP-mAb-06381
<b>Isotype</b>	IgG
<b>Reactivity</b>	Human;Mouse
<b>Applications</b>	WB
<b>Gene Name</b>	ATP6V1E2 ATP6E1 ATP6EL2 ATP6V1EL2
<b>Protein Name</b>	V-type proton ATPase subunit E 2 (V-ATPase subunit E 2) (Vacuolar proton pump subunit E 2)
<b>Immunogen</b>	Synthesized peptide derived from part region of human protein
<b>Specificity</b>	VATE2 Monoclonal Antibody detects endogenous levels of protein.
<b>Formulation</b>	Liquid in PBS containing 50% glycerol, and 0.02% sodium azide.
<b>Source</b>	Monoclonal, Mouse,IgG
<b>Purification</b>	The antibody was affinity-purified from mouse antiserum by affinity-chromatography using epitope-specific immunogen.
<b>Dilution</b>	WB 1:500-1:2000
<b>Concentration</b>	1 mg/ml
<b>Purity</b>	≥90%
<b>Storage Stability</b>	-20°C/1 year
<b>Synonyms</b>	
<b>Observed Band</b>	24kD
<b>Cell Pathway</b>	acrosomal vesicle,cytosol,proton-transporting two-sector ATPase complex, catalytic domain,
<b>Tissue Specificity</b>	Testis specific.
<b>Function</b>	function:Subunit of the peripheral V1 complex of vacuolar ATPase essential for assembly or catalytic function. V-ATPase is responsible for acidifying a variety of intracellular compartments in eukaryotic cells. This isoform is essential for energy coupling involved in acidification of acrosome.,similarity:Belongs to the V-ATPase e subunit family.,subunit:V-ATPase is an heteromultimeric enzyme composed of a peripheral catalytic V1 complex (components A to H) attached to an integral membrane V0 proton pore complex (components: a, c, c', c'' and d).,tissue specificity:Testis specific.,
<b>Background</b>	function:Subunit of the peripheral V1 complex of vacuolar ATPase essential for assembly or catalytic function. V-ATPase is responsible for acidifying a variety of intracellular compartments in eukaryotic cells. This isoform is essential for energy coupling involved in acidification of acrosome.,similarity:Belongs to the V-ATPase e subunit family.,subunit:V-ATPase is an heteromultimeric enzyme composed of a peripheral catalytic V1 complex (components A to H) attached to an integral membrane V0 proton pore complex (components: a, c, c', c'' and d).,tissue



specificity:Testis specific.,

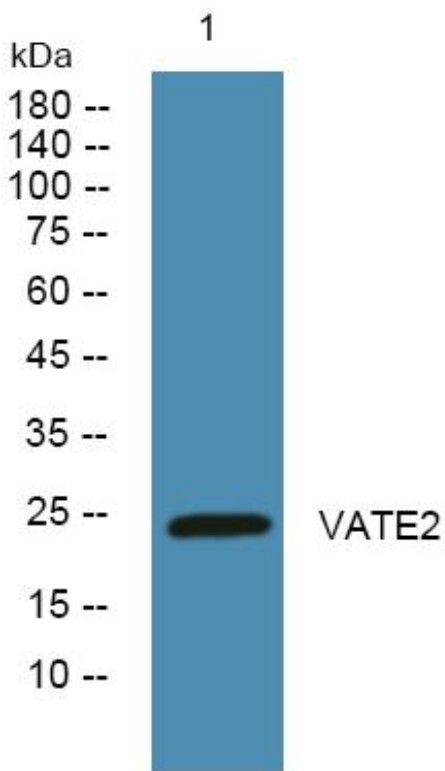
**matters needing attention**

Avoid repeated freezing and thawing!

**Usage suggestions**

This product can be used in immunological reaction related experiments. For more information, please consult technical personnel.

**Products Images**



Western Blot analysis of various cells using VATE2 Monoclonal Antibody